

A319/A320/A321
STUDENT NOTES
LR Family to A319/A320/A321 PW1100G - T1+T2
70-STANDARD PRACTICES - ENGINES

This document must be used for training purposes only.

Under no circumstances should this document be used as a reference.

It will not be updated.

All rights reserved

No part of this manual may be reproduced in any form,
by photostat, microfilm, retrieval system, or any other means,
without the prior written permission of AIRBUS S.A.S.



AIRBUS Environmental Recommendation.
Please consider your environmental responsibility before printing this document.

70 Power Plant PW1100G Presentation.....	2
Power Plant Drain Presentation.....	6
FADEC Architecture.....	7
FADEC Electrical PWR SPLY Control.....	8
Ignition & Starting System Presentation.....	9
Air System Description/Operation.....	10
Thrust Reverser D/O.....	12
Oil System D/O.....	13
Opening & Closing of Engine Cowl Doors.....	14

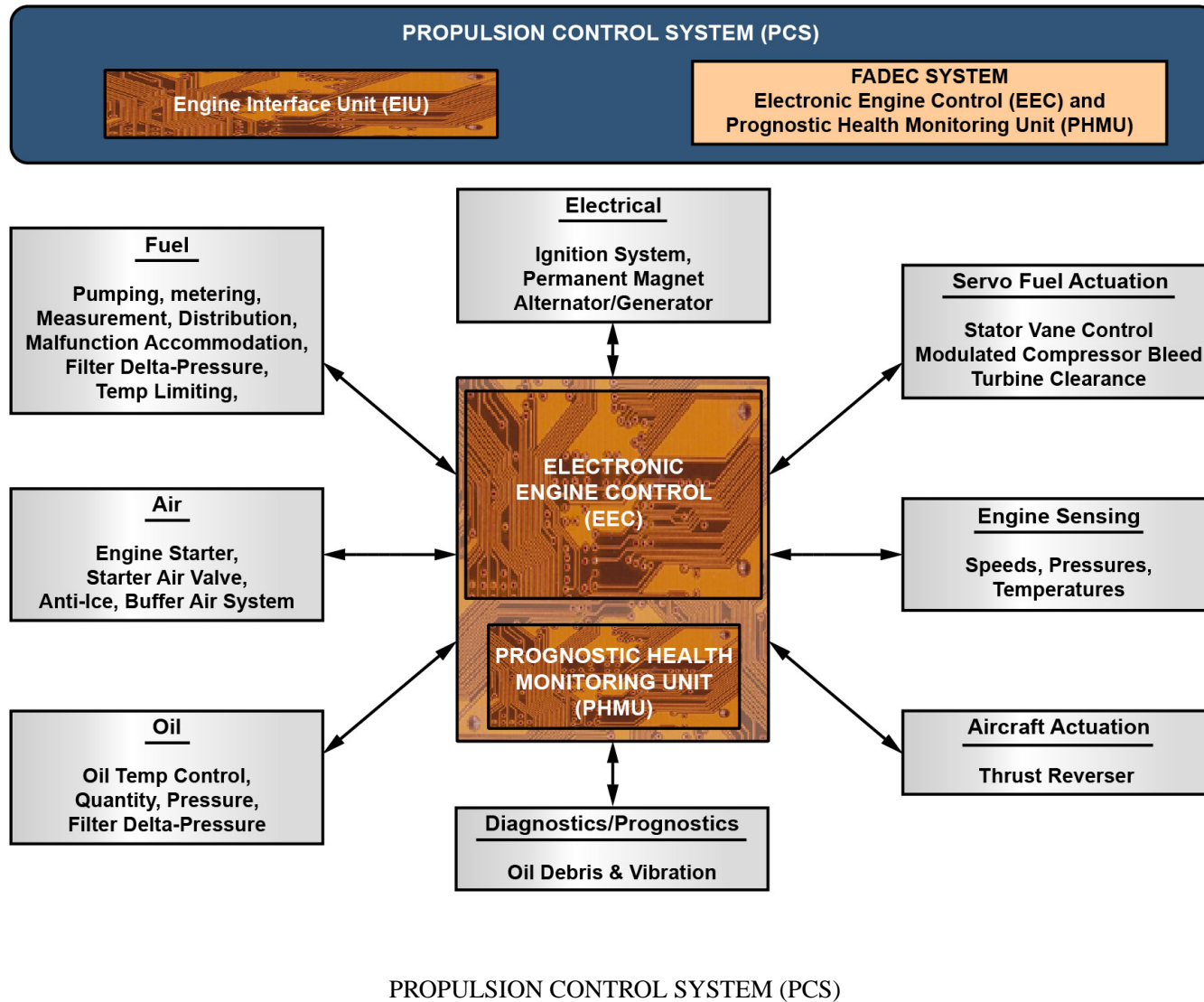
A/C	A/C MODEL	ENG MODEL	MTO
A319	A319-171	PW1124G-JM	24.5 klbs
A319	A319-172	PW1122G-JM	22.9 klbs
A319	A319-173	PW1127G-JM	26.8 klbs
A320	A320-271	PW1127G-JM	26.8 klbs
A320	A320-272	PW1124G-JM	24 klbs
A321	A321-271	PW1133G-JM	32.7 klbs
A321	A321-272	PW1130G-JM	29.7 klbs

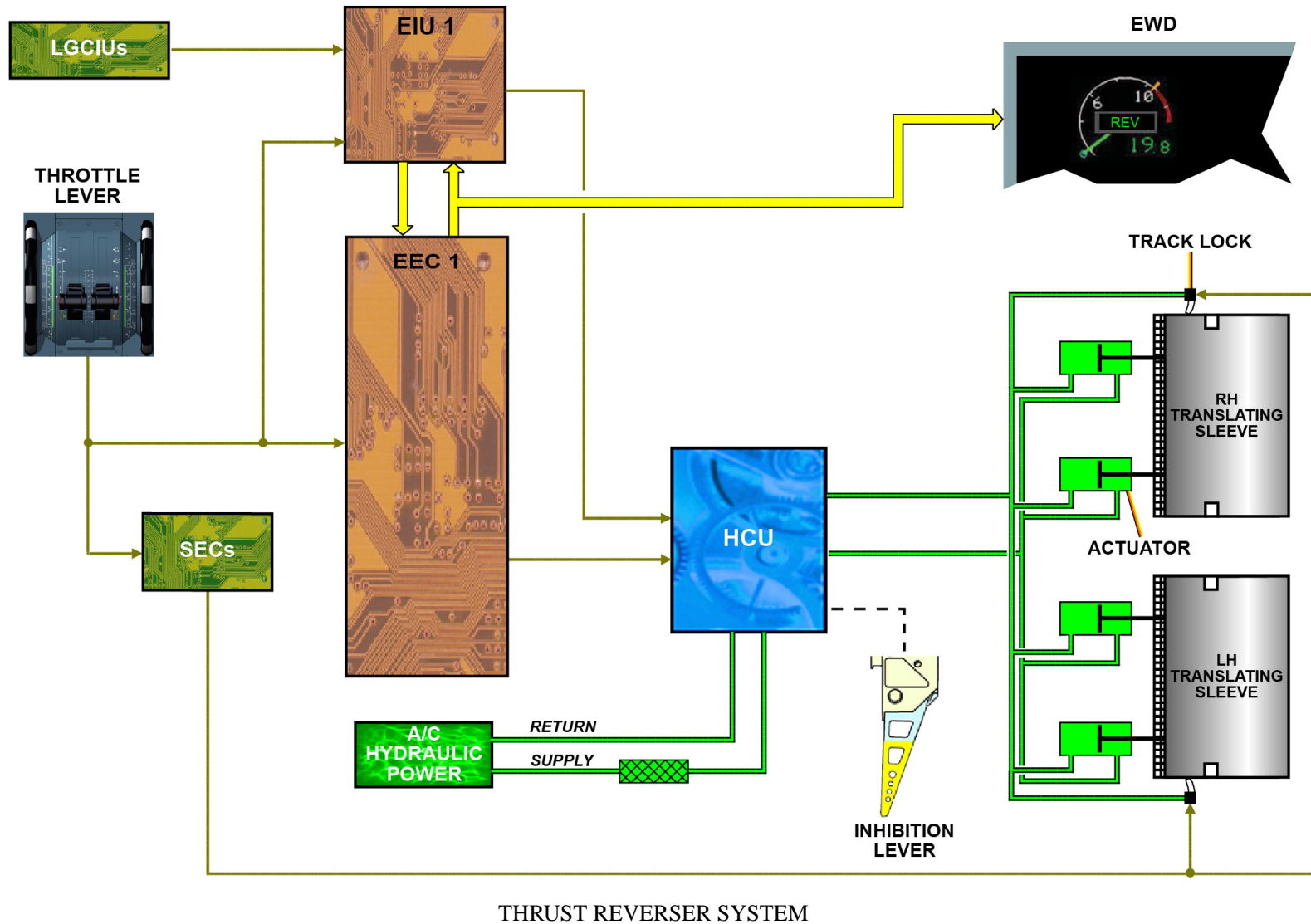
MTO: Maximum Take-off

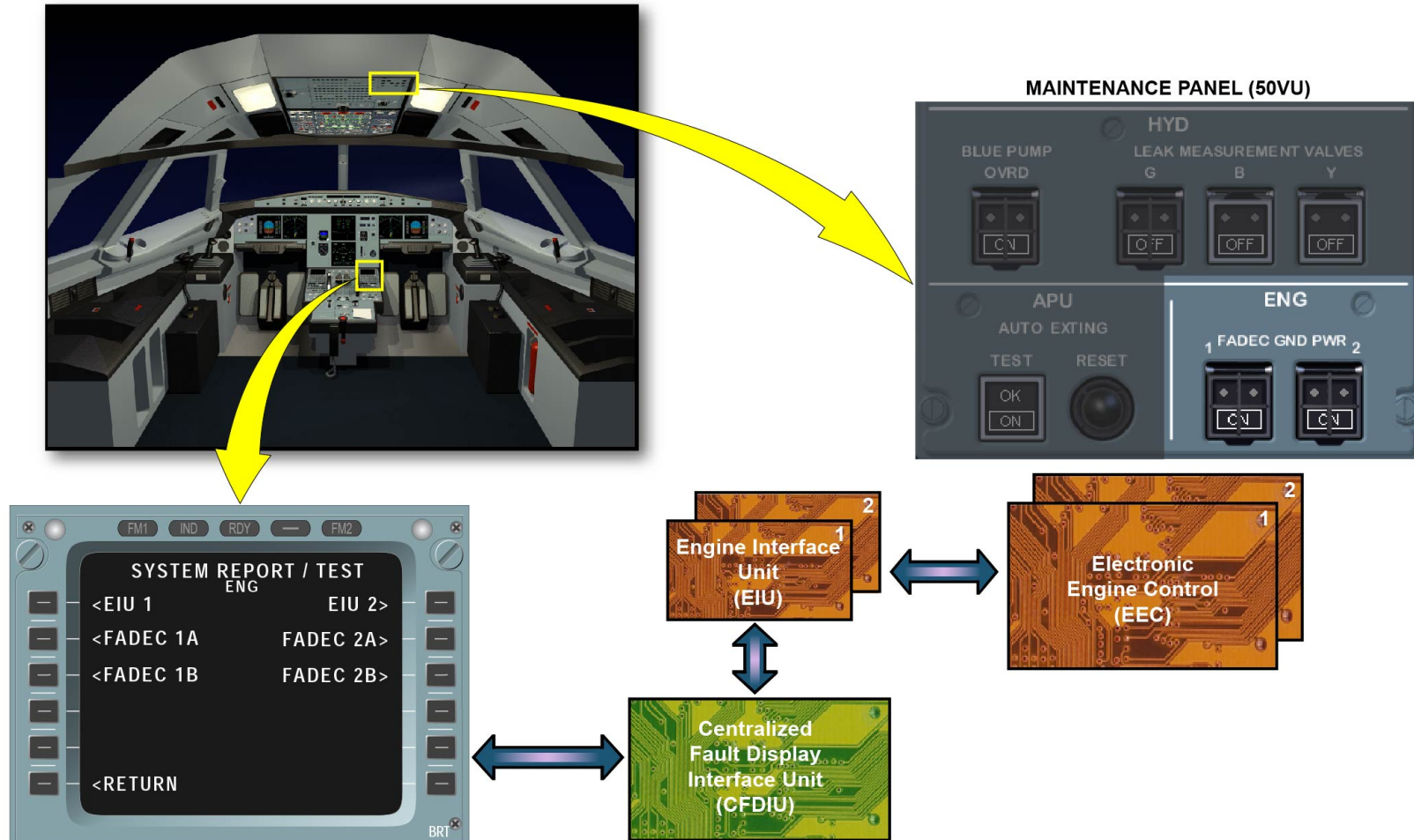


PW1127G-JM

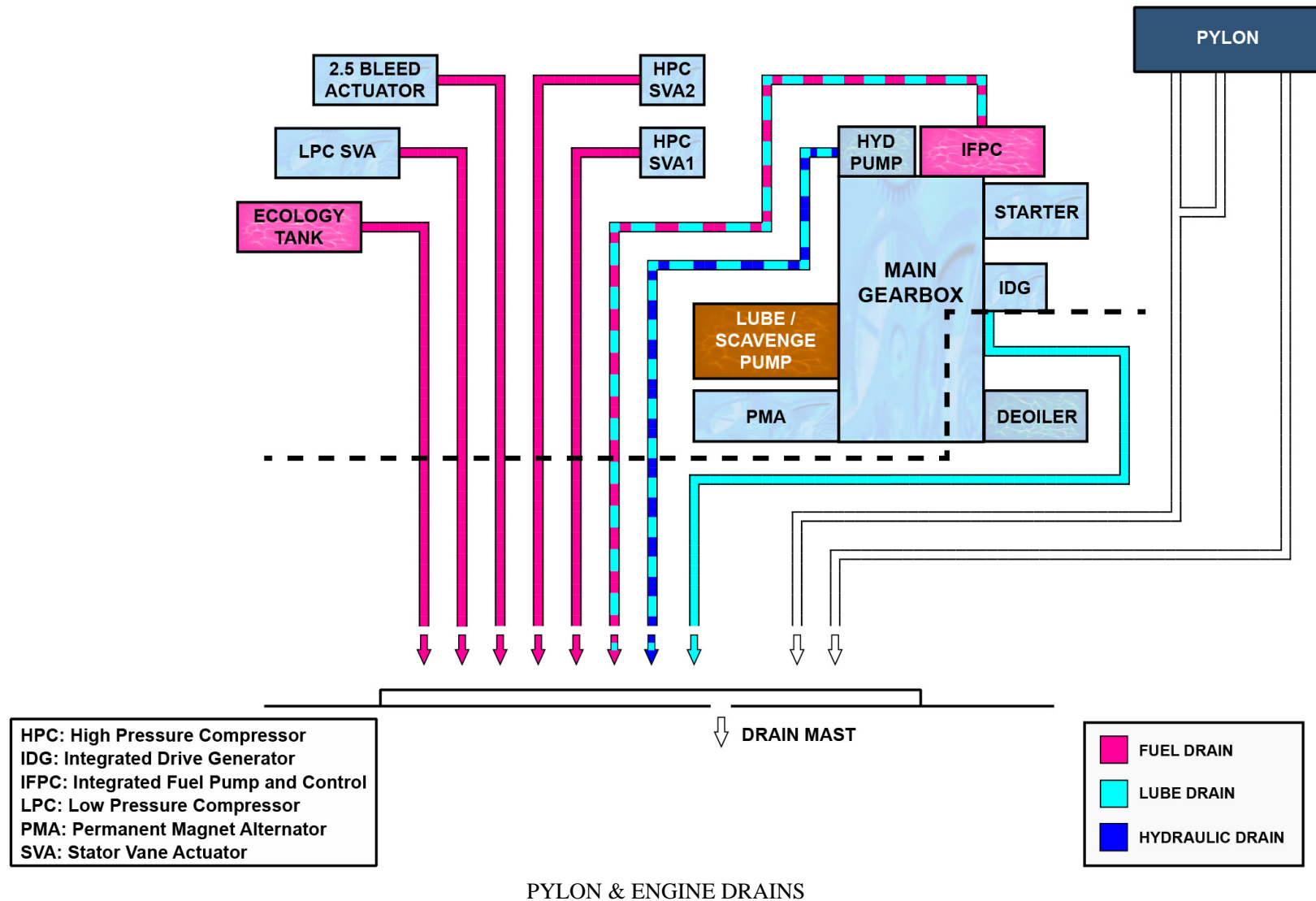
INTRODUCTION

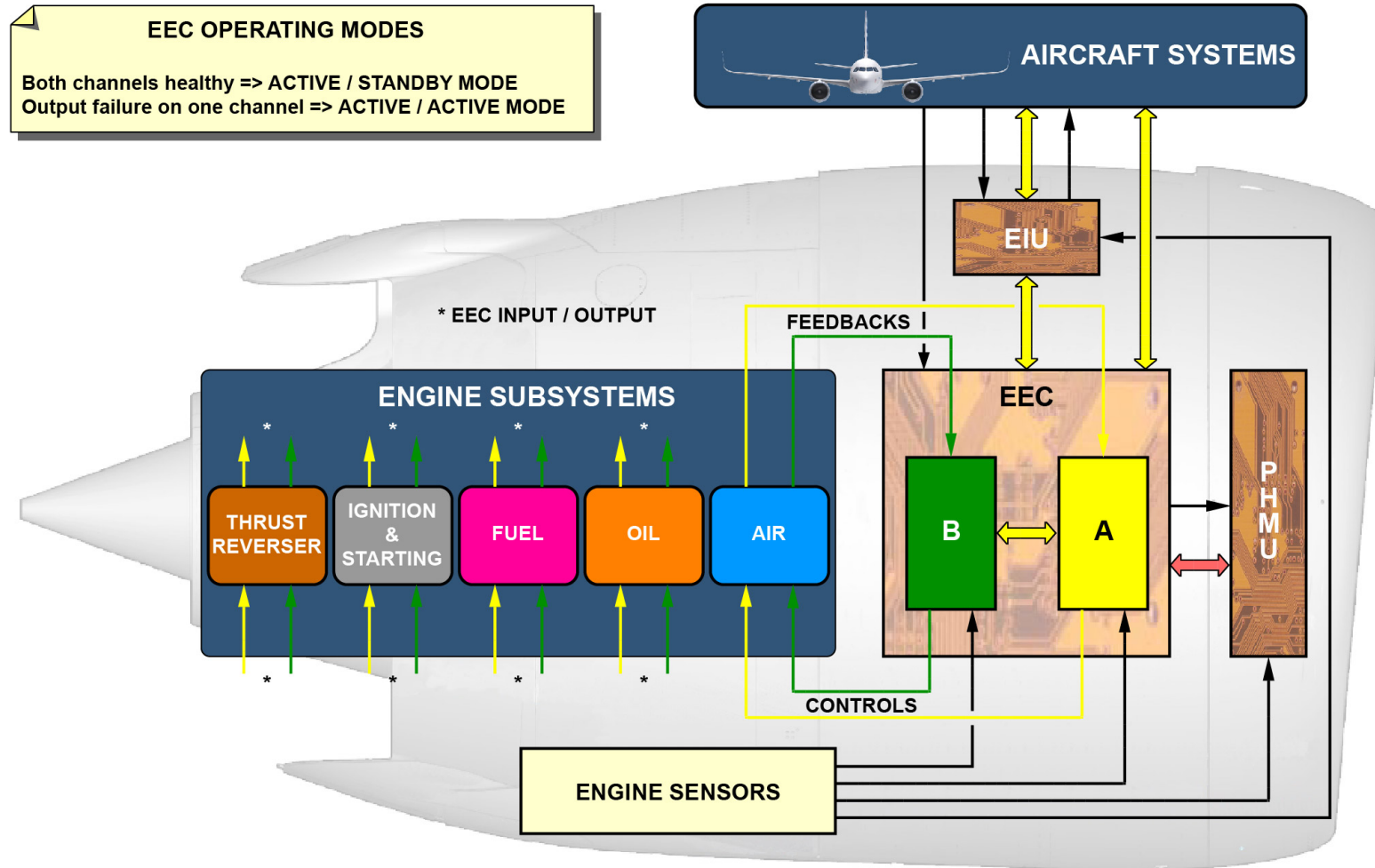






MAINTENANCE/TEST FACILITIES

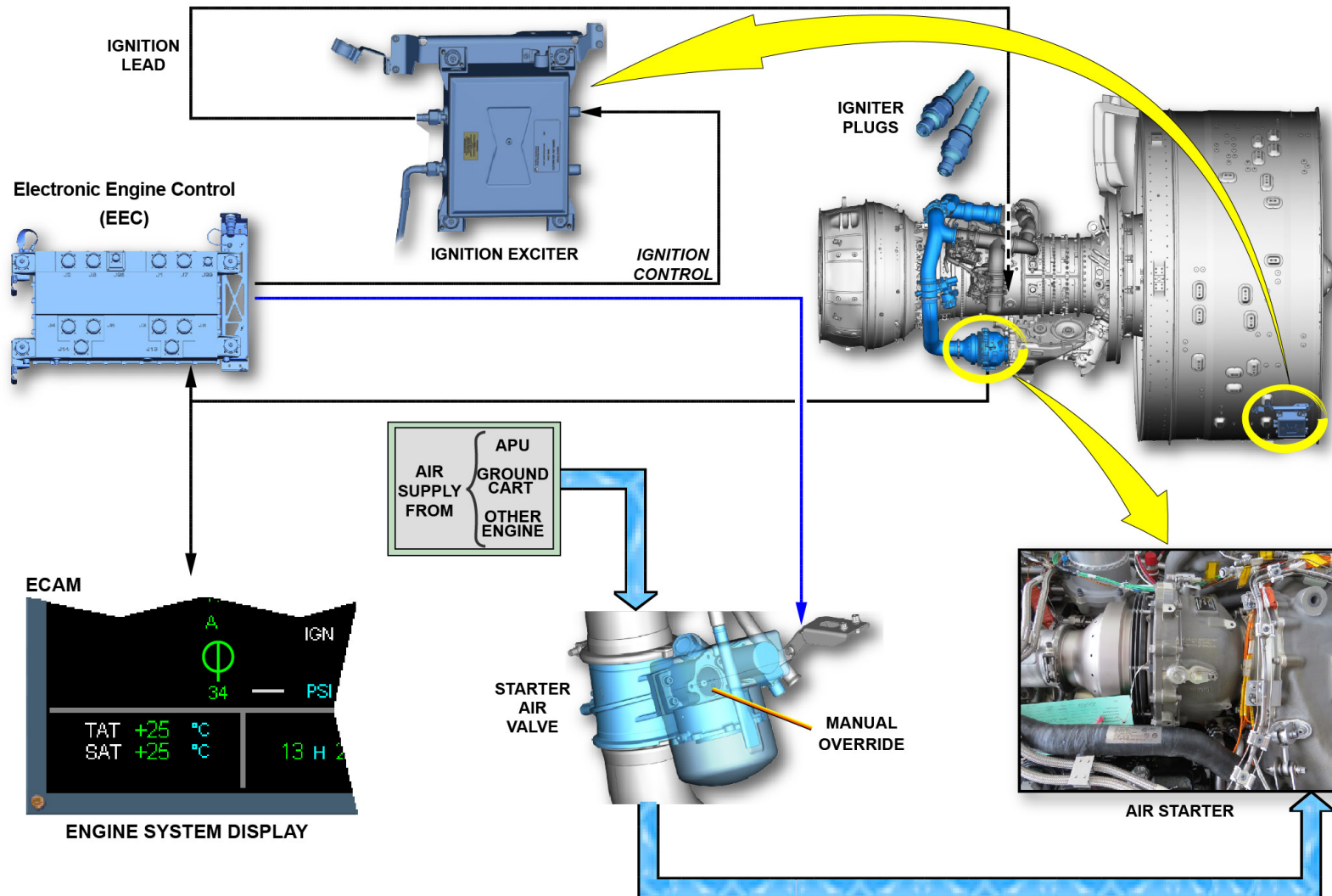




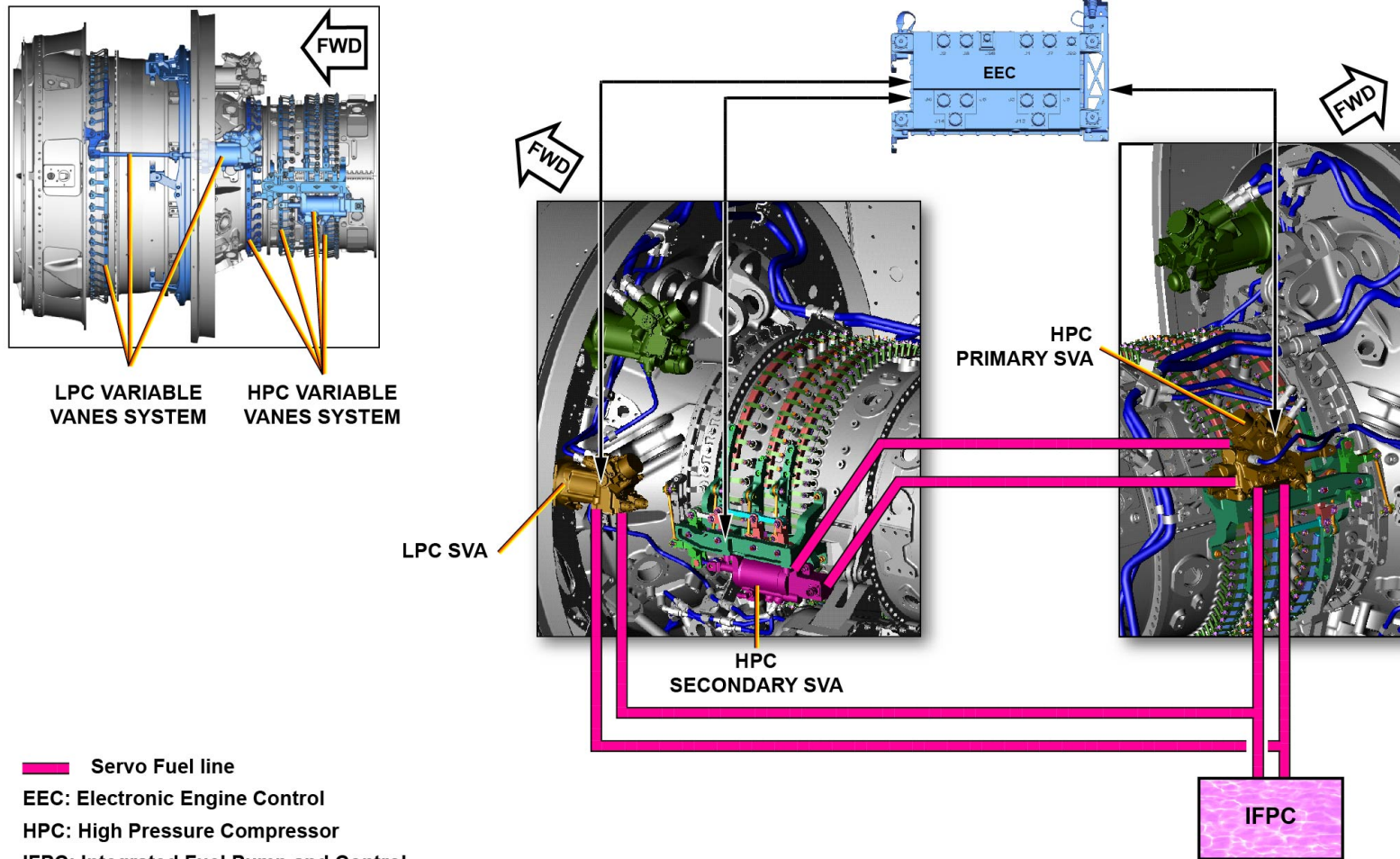
EEC: ELECTRONIC ENGINE CONTROL
EIU: ENGINE INTERFACE UNIT
PHMU: PROGNOSTIC AND HEALTH MONITORING UNIT

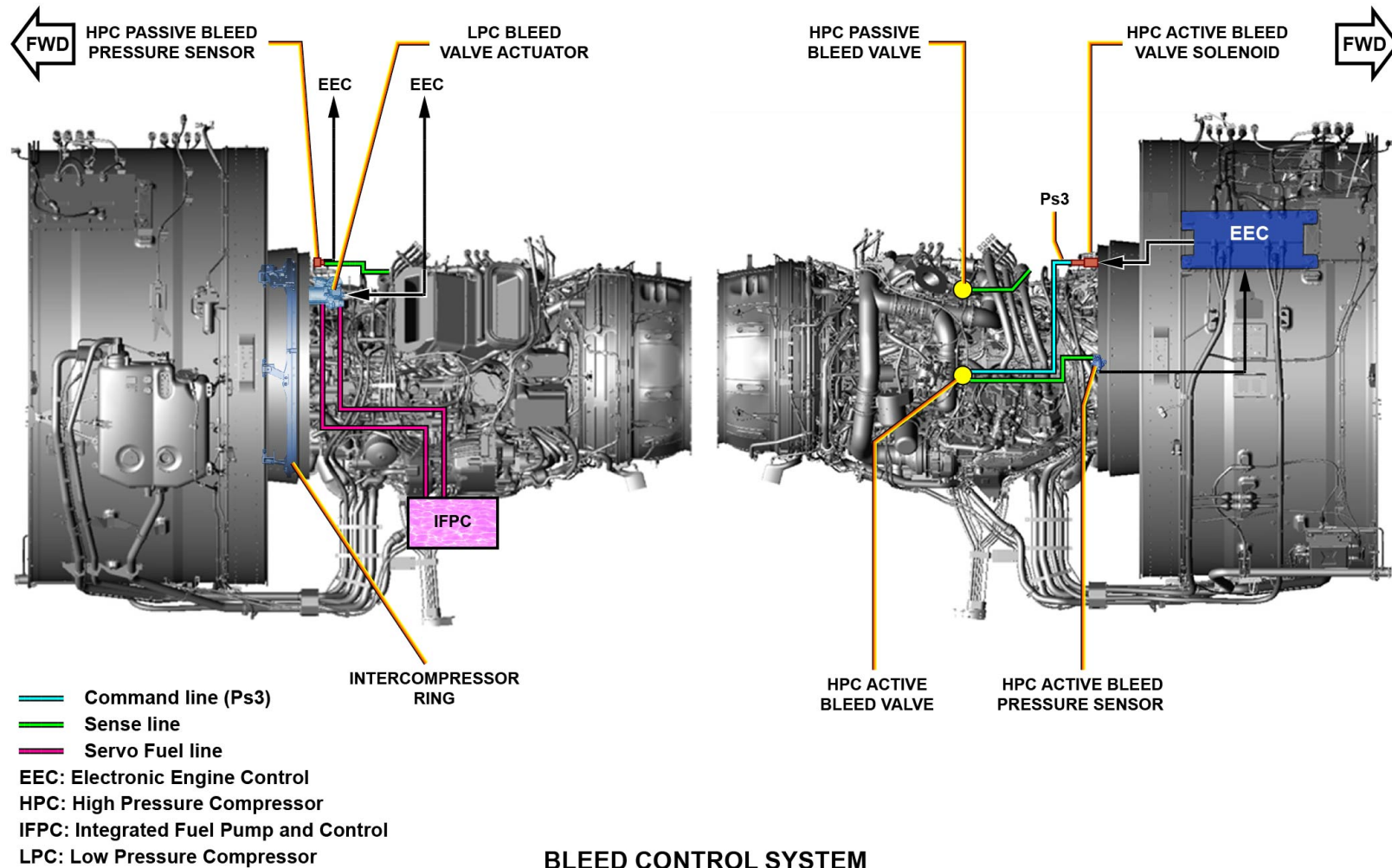
PROCESS



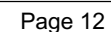


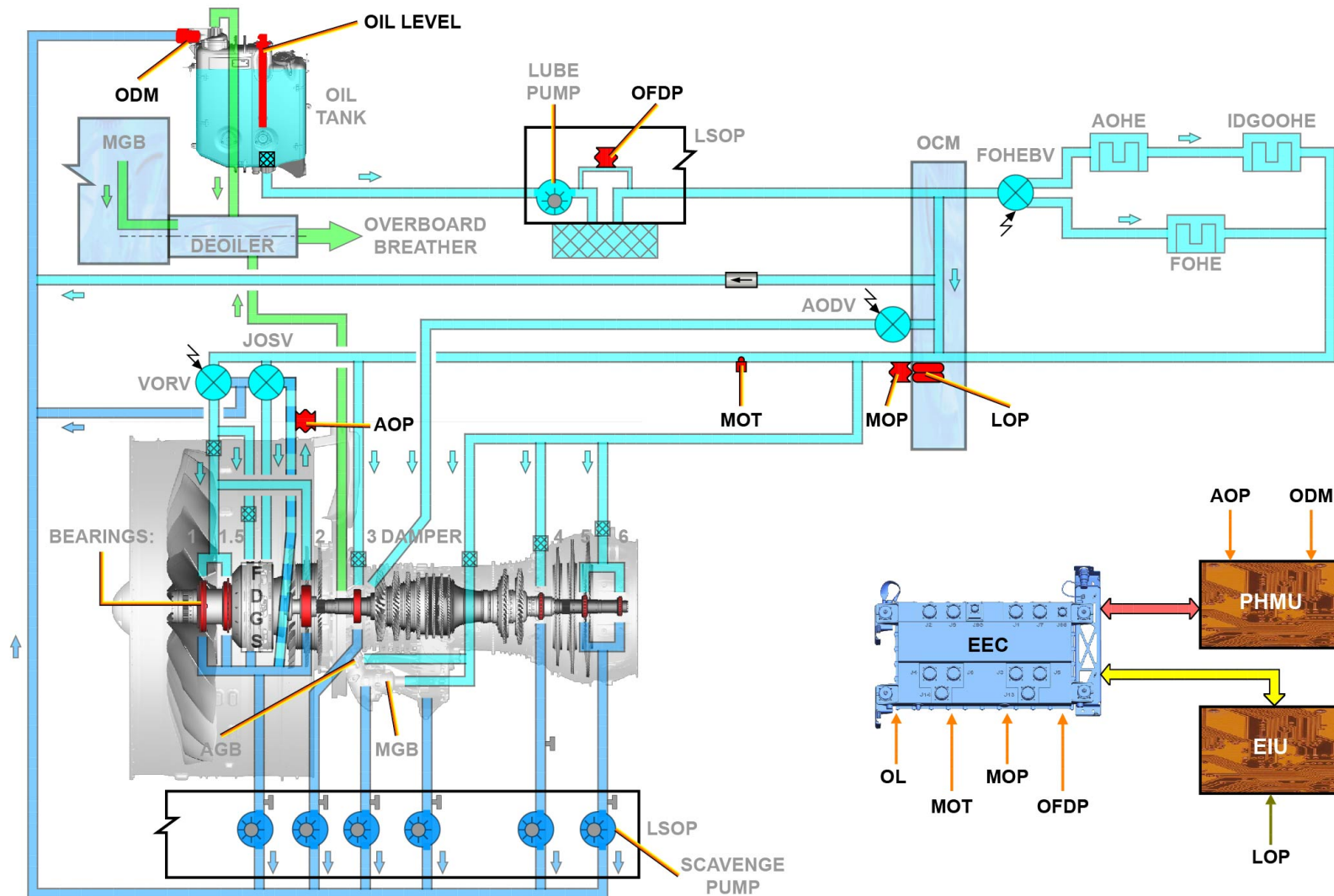
GENERAL ... MAINTENANCE PRACTICES



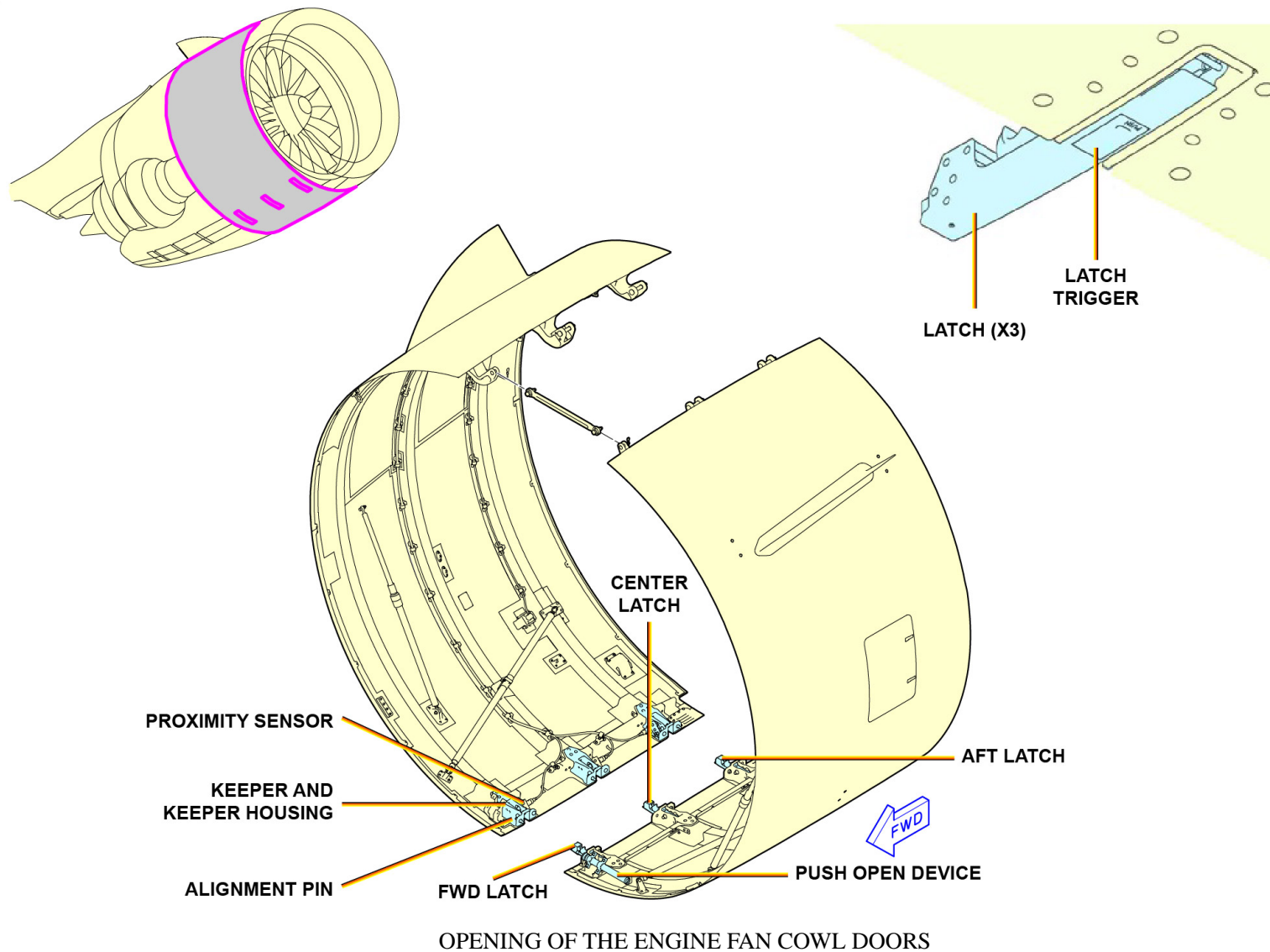


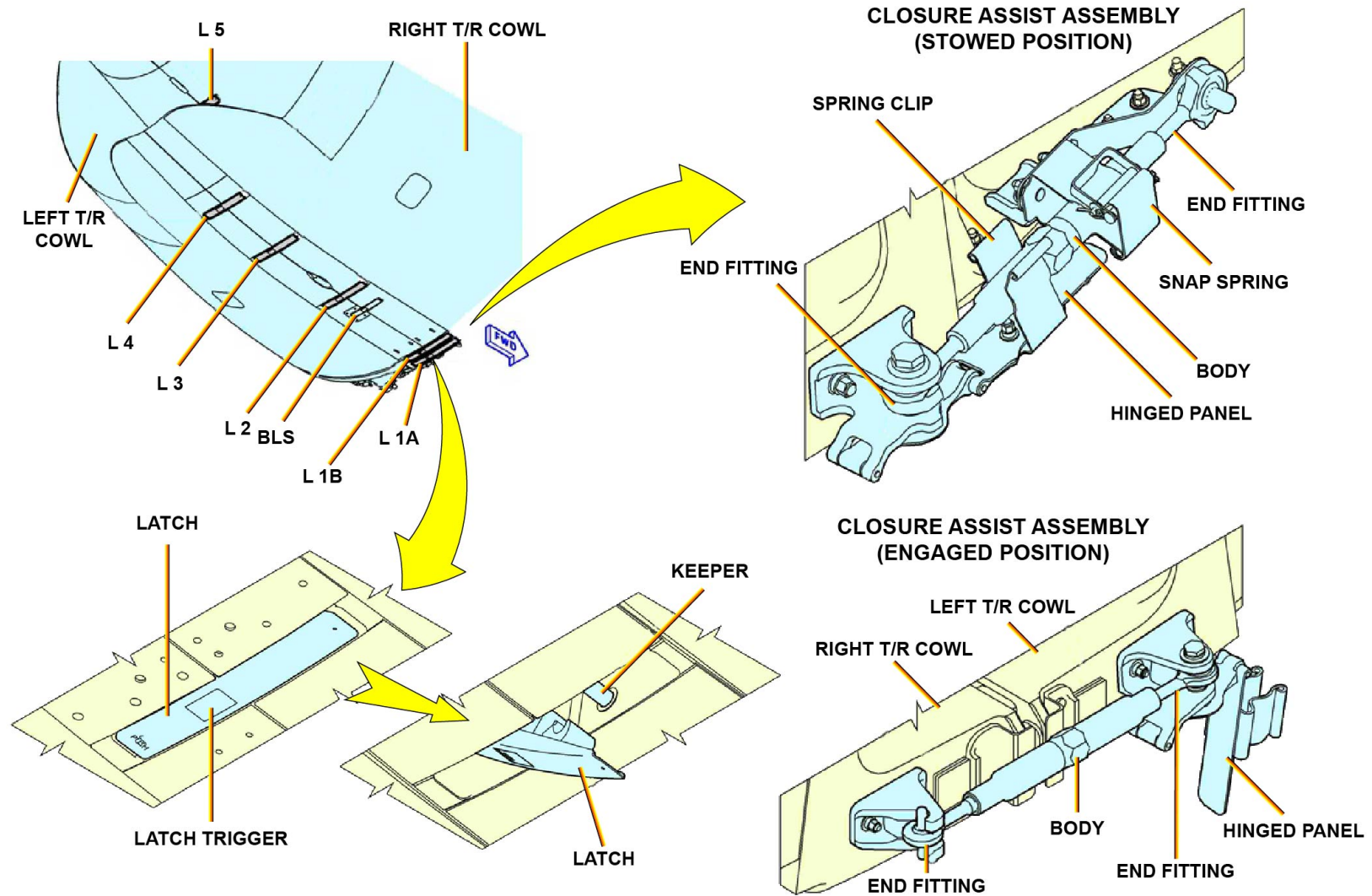
COMPRESSOR AIRFLOW CONTROL - BLEED CONTROL SYSTEM



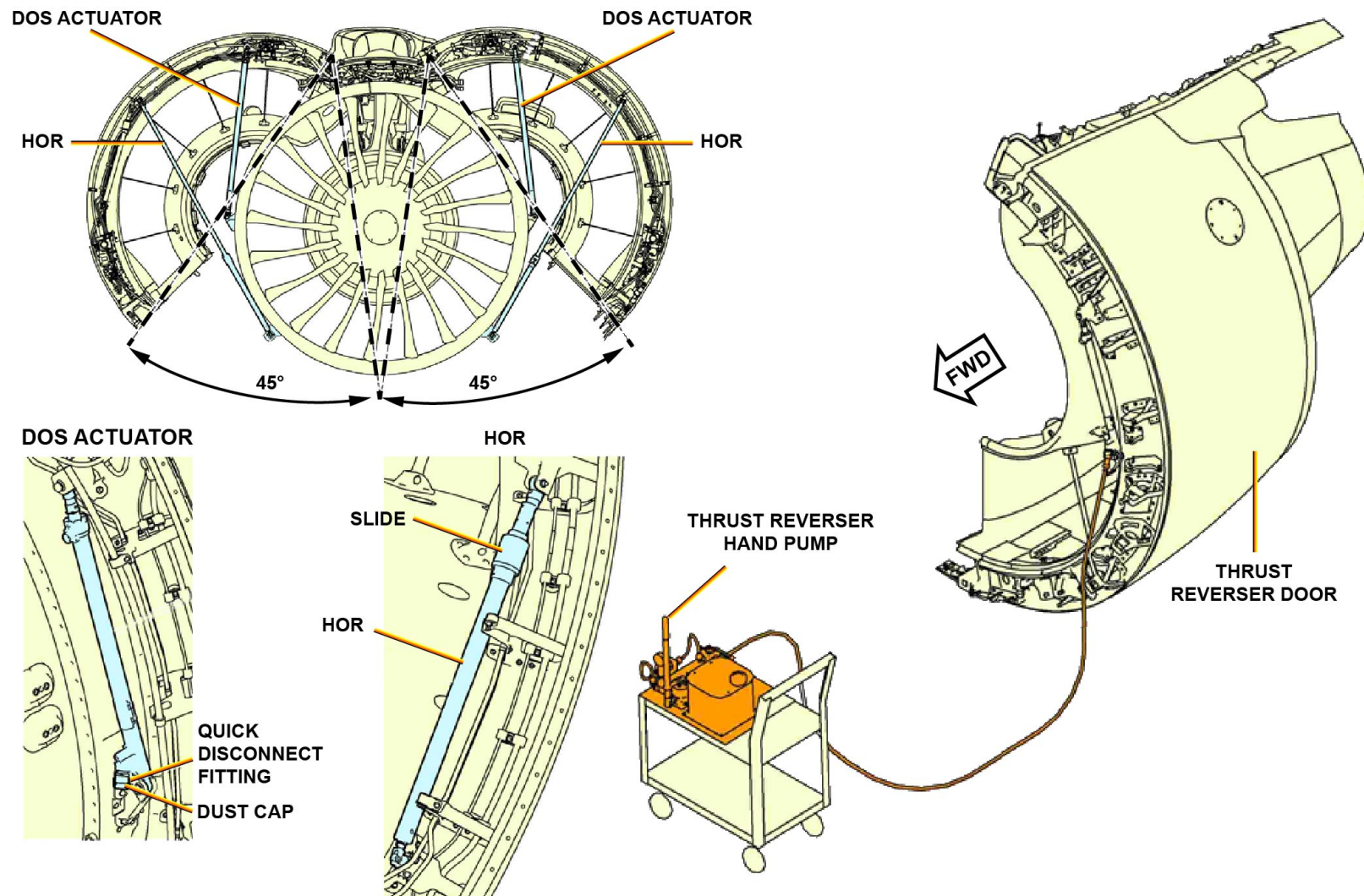


OIL MONITORING AND INDICATING - OIL LEVEL INDICATING ... AUXILIARY OIL PRESSURE INDICATING





OPENING OF THE ENGINE THRUST REVERSER COWL DOORS



OPENING OF THE ENGINE THRUST REVERSER COWL DOORS



© AIRBUS SAS 2015. All rights reserved.
Confidential and proprietary document.

This document and all information contained herein is the sole property of AIRBUS SAS. No intellectual property rights are granted by the delivery of this document or the disclosure of its content. This document shall not be reproduced or disclosed to a third party without the express written consent of AIRBUS SAS. This document and its content shall not be used for any purpose other than for which it is supplied. The statements made herein do not constitute an offer. They are based on the mentioned assumptions and are expressed in good faith. Where the supporting grounds for these statements are not shown, AIRBUS SAS will be pleased to explain the basis thereof.

AIRBUS, its logo, A300, A310, A318, A319, A320, A321, A330, A340, A350, A380, A400M are registered trademarks.