

**A319/A320/A321**  
**STUDENT NOTES**  
**LR Family to A319/A320/A321 PW1100G - T1+T2**  
**32-LANDING GEAR**



This document must be used for training purposes only.

Under no circumstances should this document be used as a reference.

It will not be updated.

All rights reserved

No part of this manual may be reproduced in any form,  
by photostat, microfilm, retrieval system, or any other means,  
without the prior written permission of AIRBUS S.A.S.

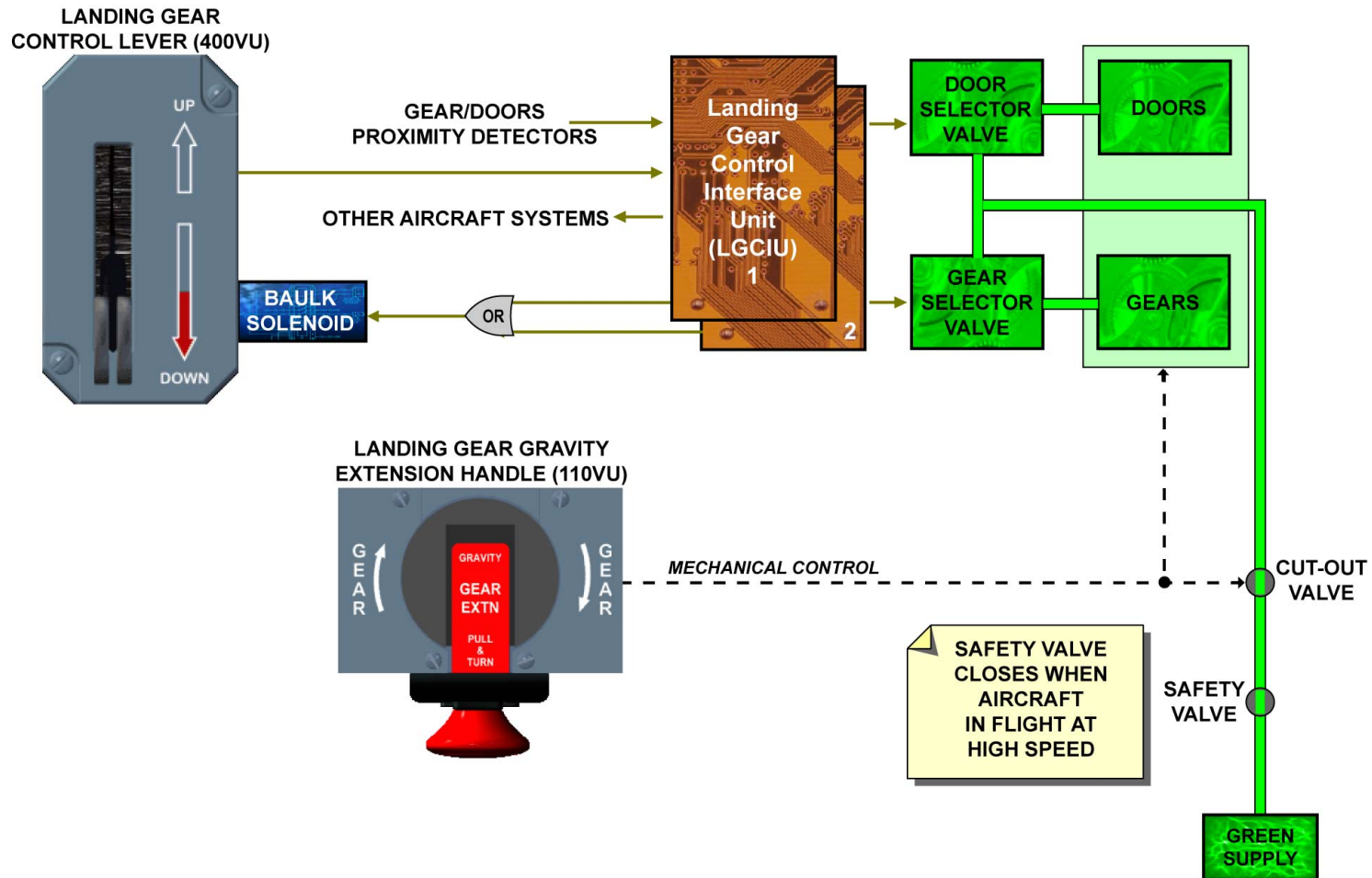


AIRBUS Environmental Recommendation.

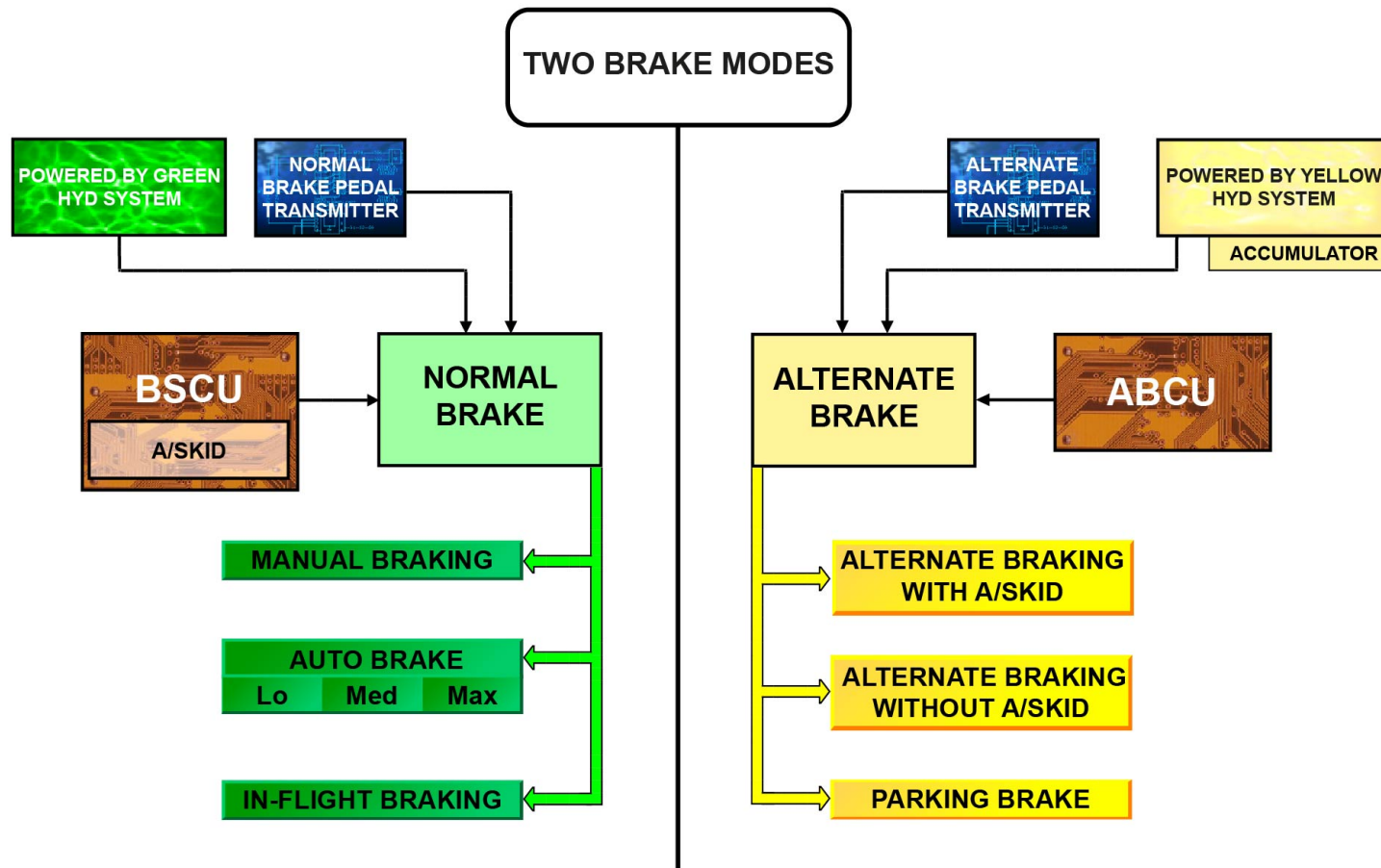
Please consider your environmental responsibility before printing this document.



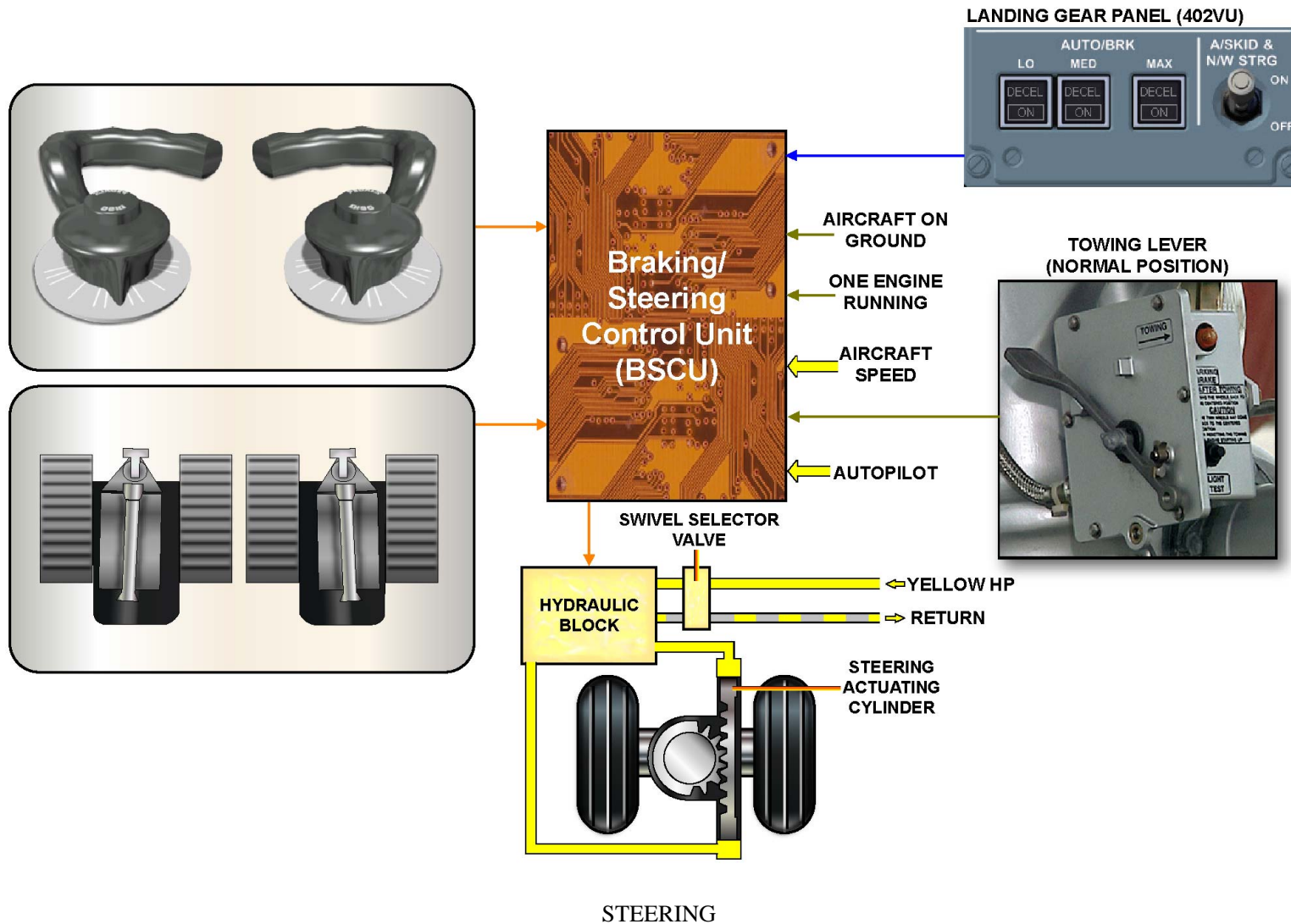
32 Landing Gear Presentation.....	2
Landing Gear Free Fall Extension.....	5
Main Landing Gear Description.....	6
Main Landing Gear Doors Description.....	9
Nose Landing Gear Description.....	10
Nose Landing Gear Doors Description.....	12
LGCIU Control Signals.....	13
LGCIU Monitoring Interfaces.....	14
Brake System Description.....	15
Auto-Brake System D/O.....	17
Anti-Skid Function.....	18
Brake System Operation.....	19
System Description/Operation.....	22
BSCU Control Interfaces.....	23



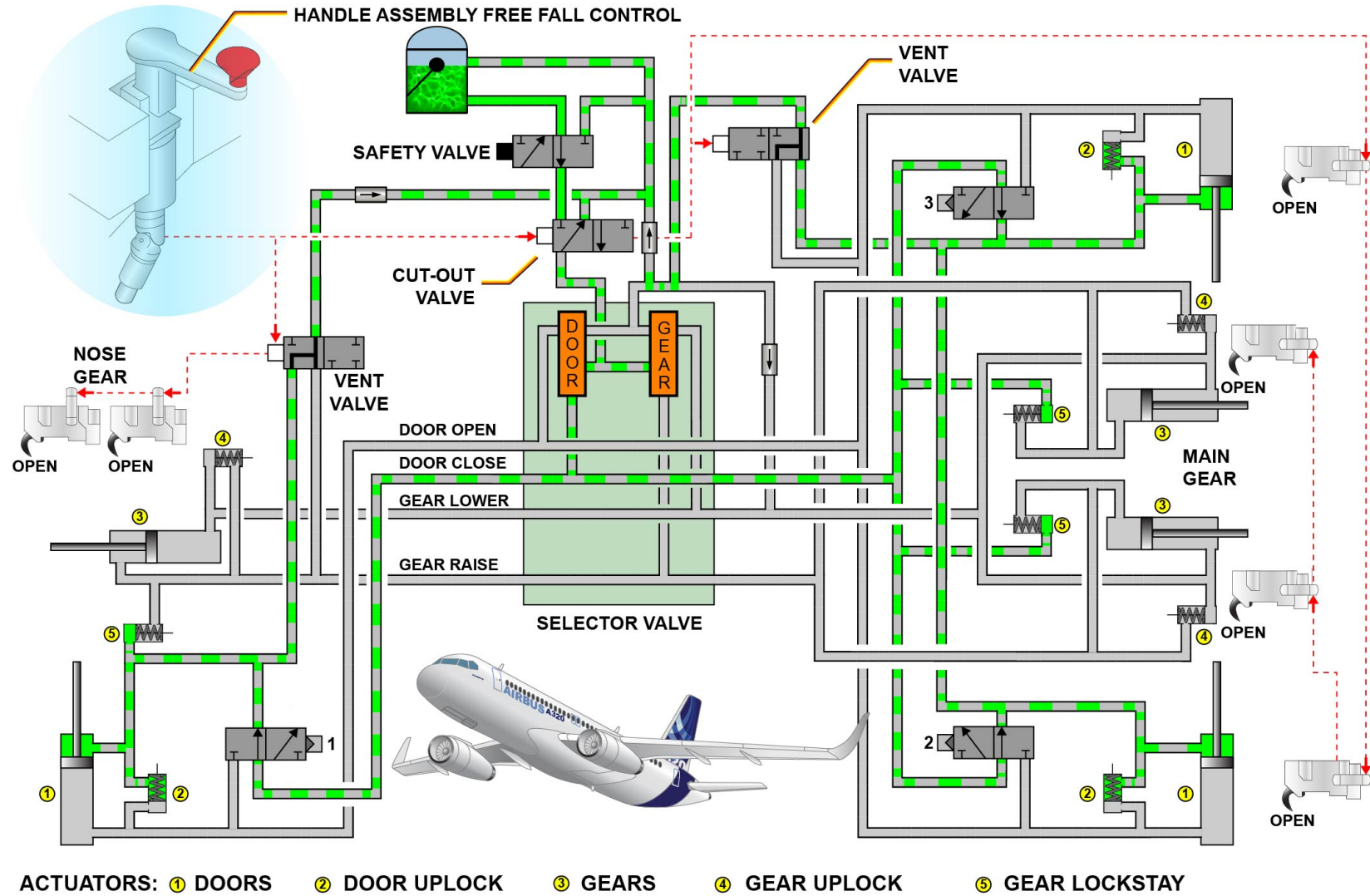
## LANDING GEAR EXTENSION AND RETRACTION



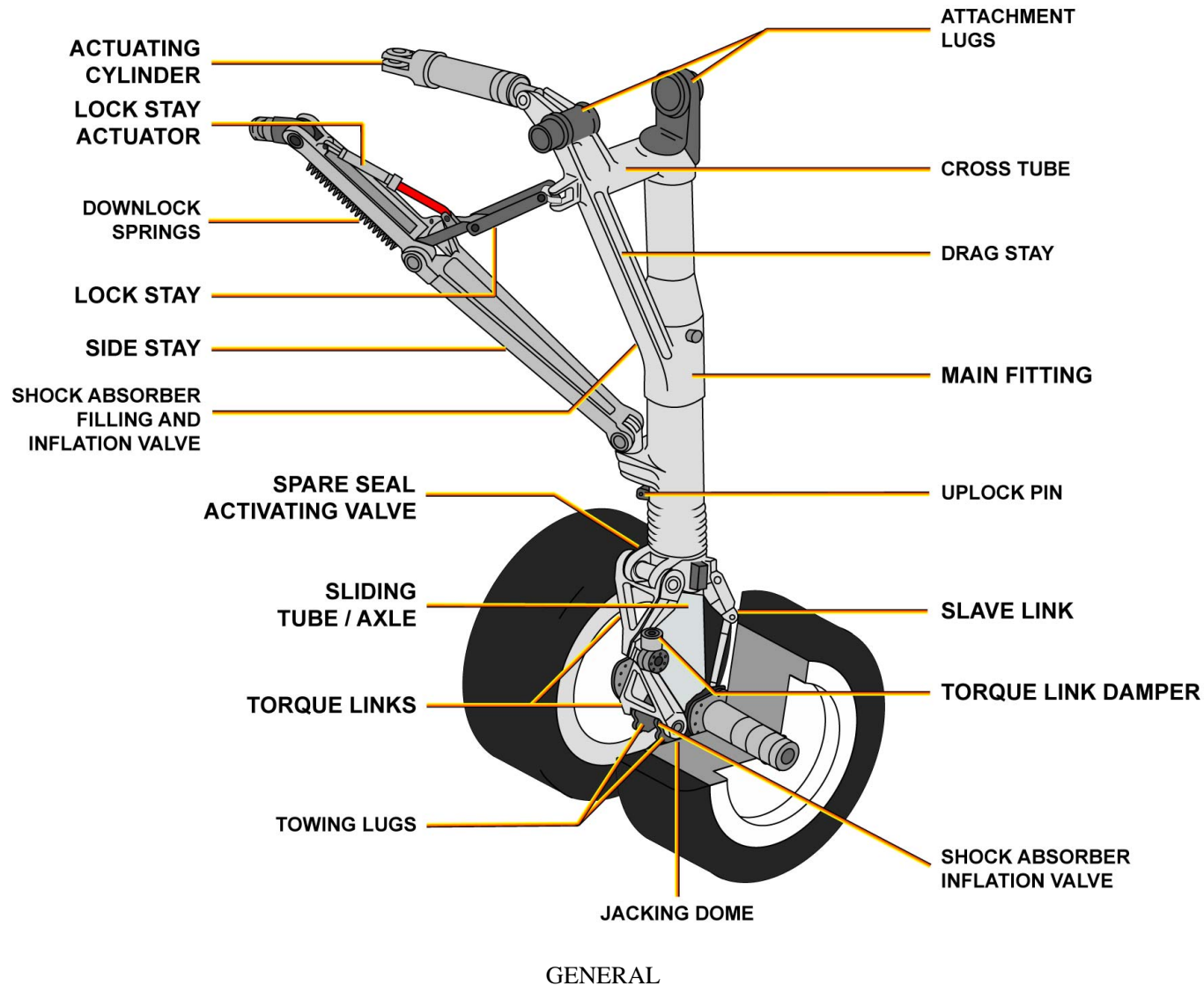
BRAKING - NORMAL BRAKING ... PARKING BRAKE

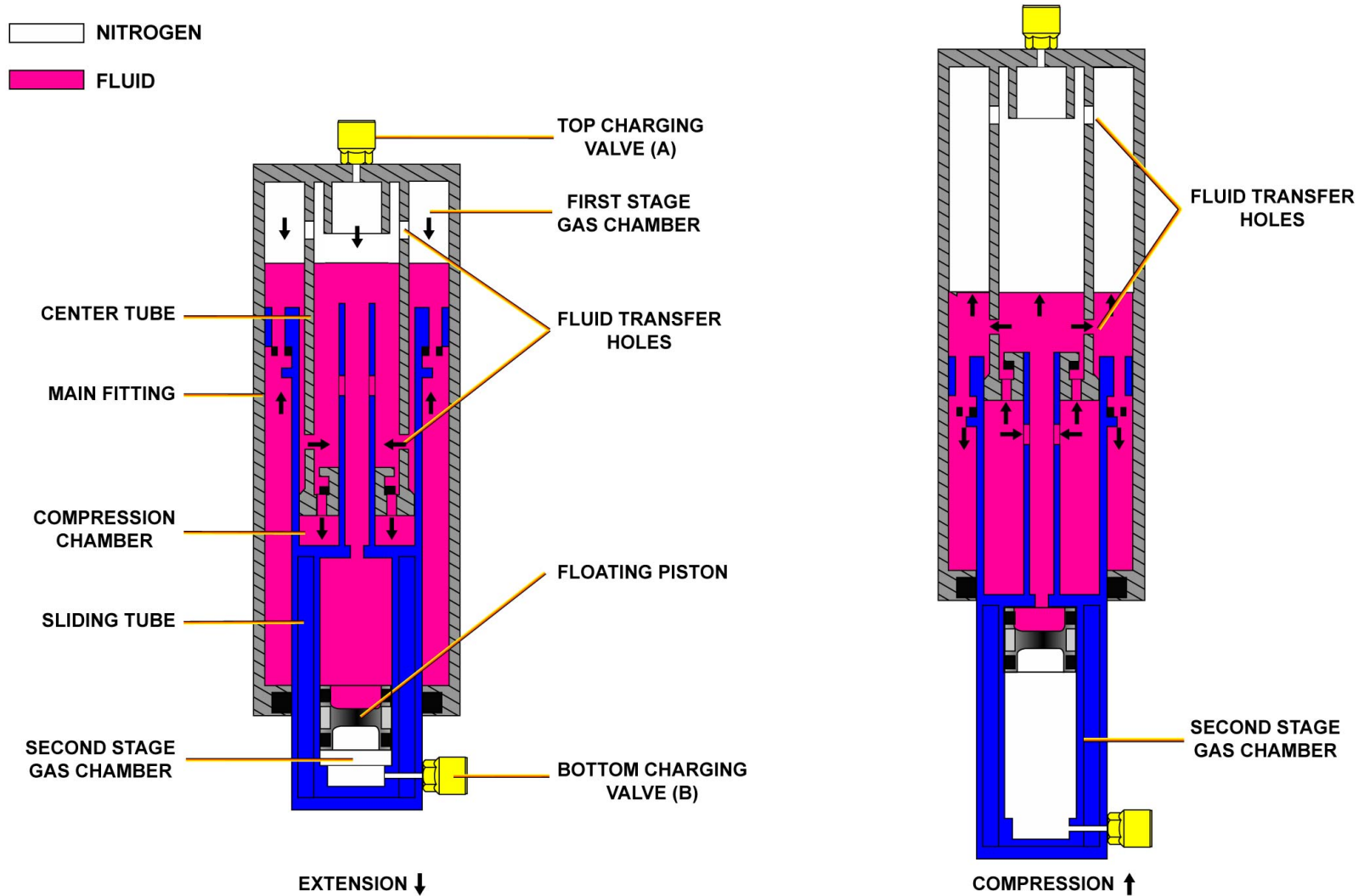




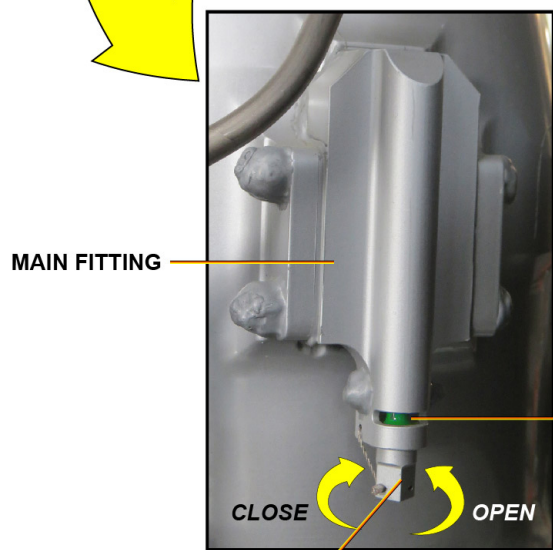
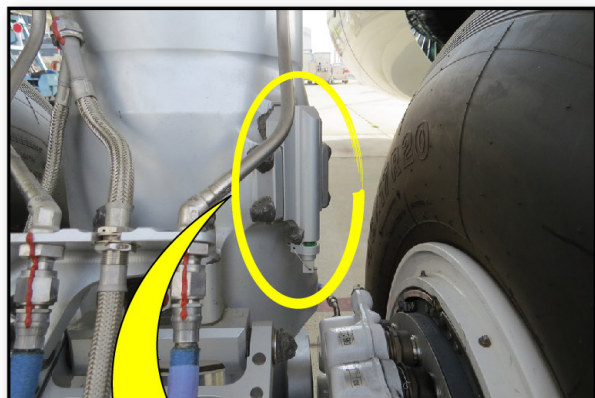


LEVER MOVEMENT BETWEEN 1.9 AND 3 TURNS

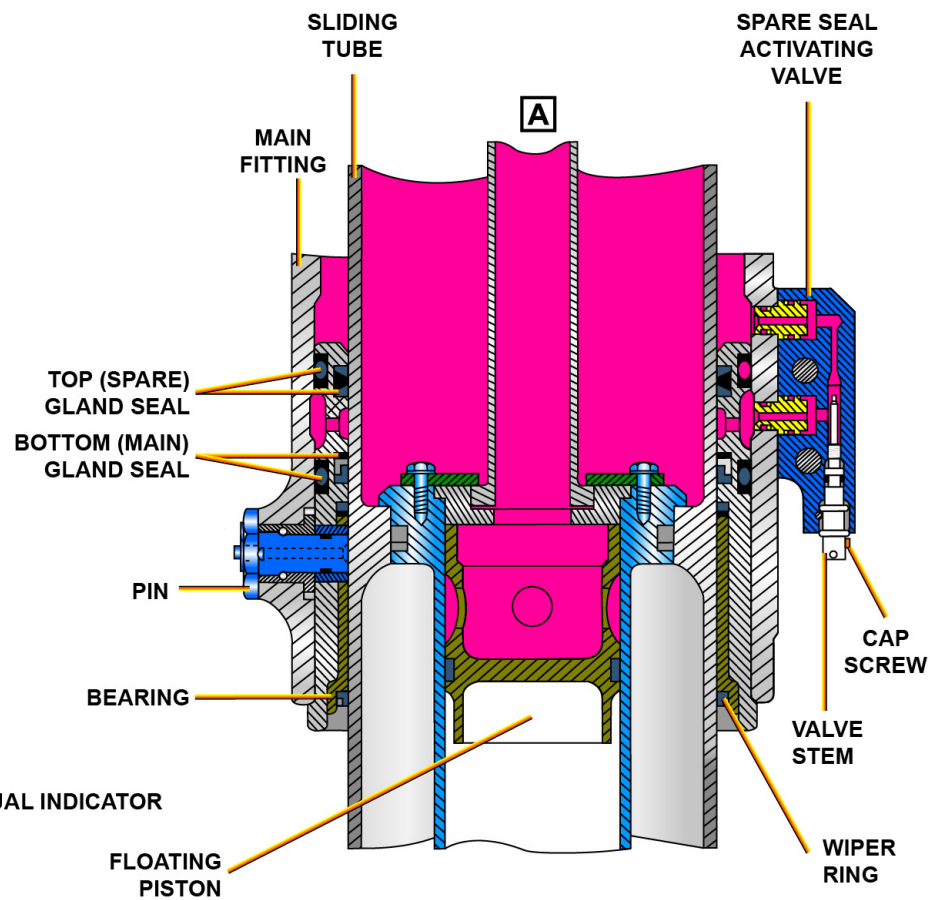




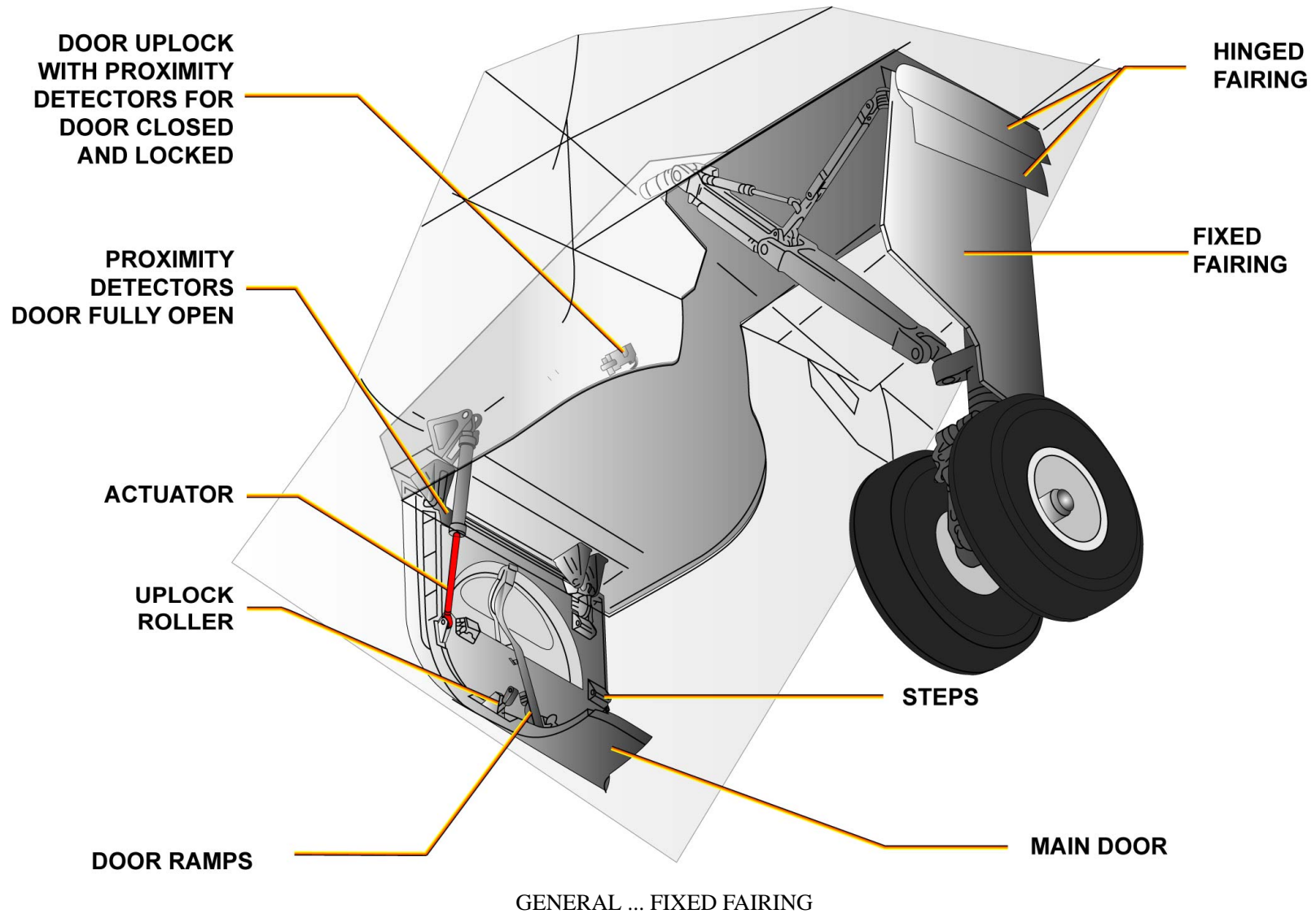
MAIN FITTING - SHOCK ABSORBER



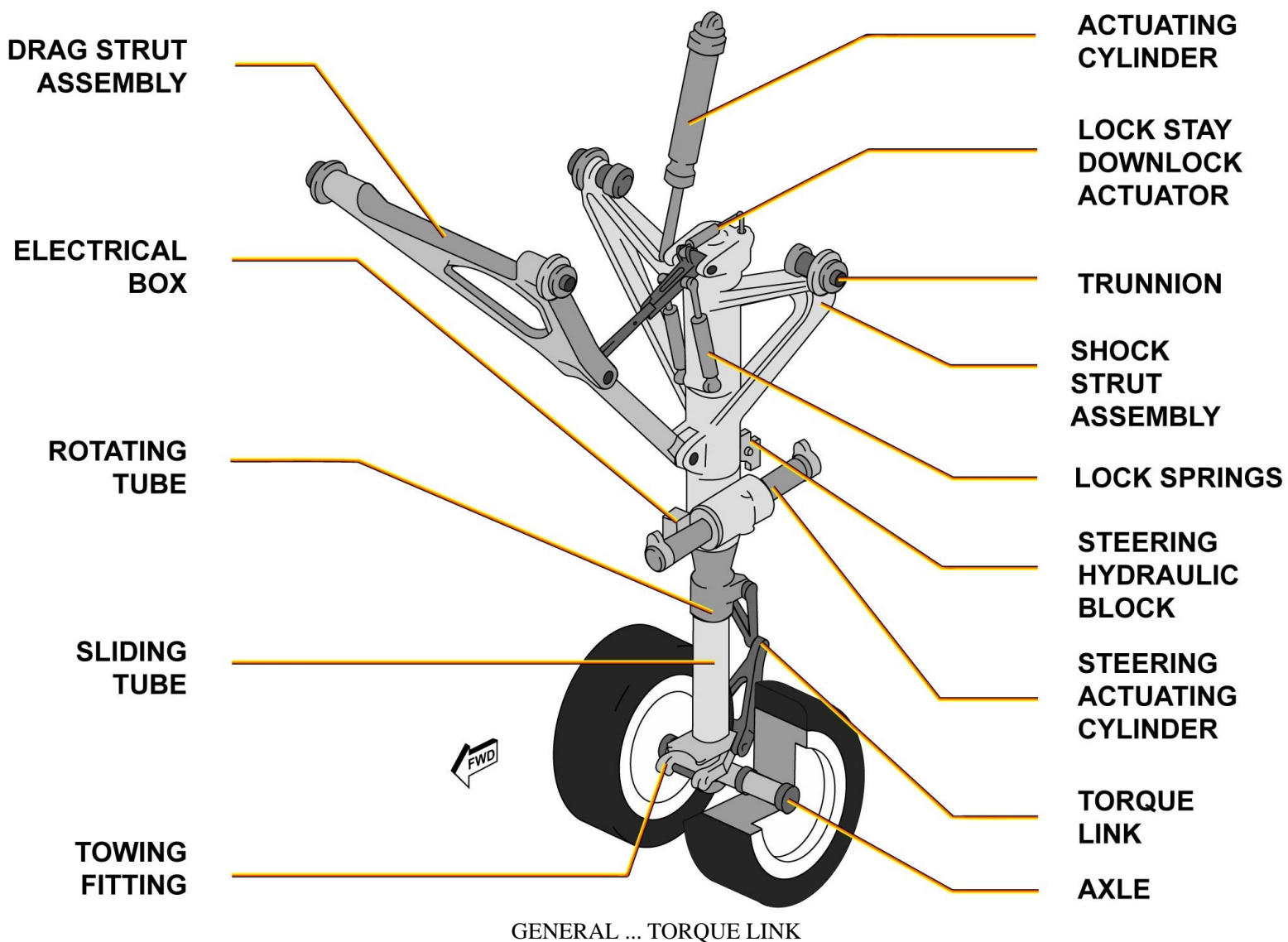
VALVE STEM

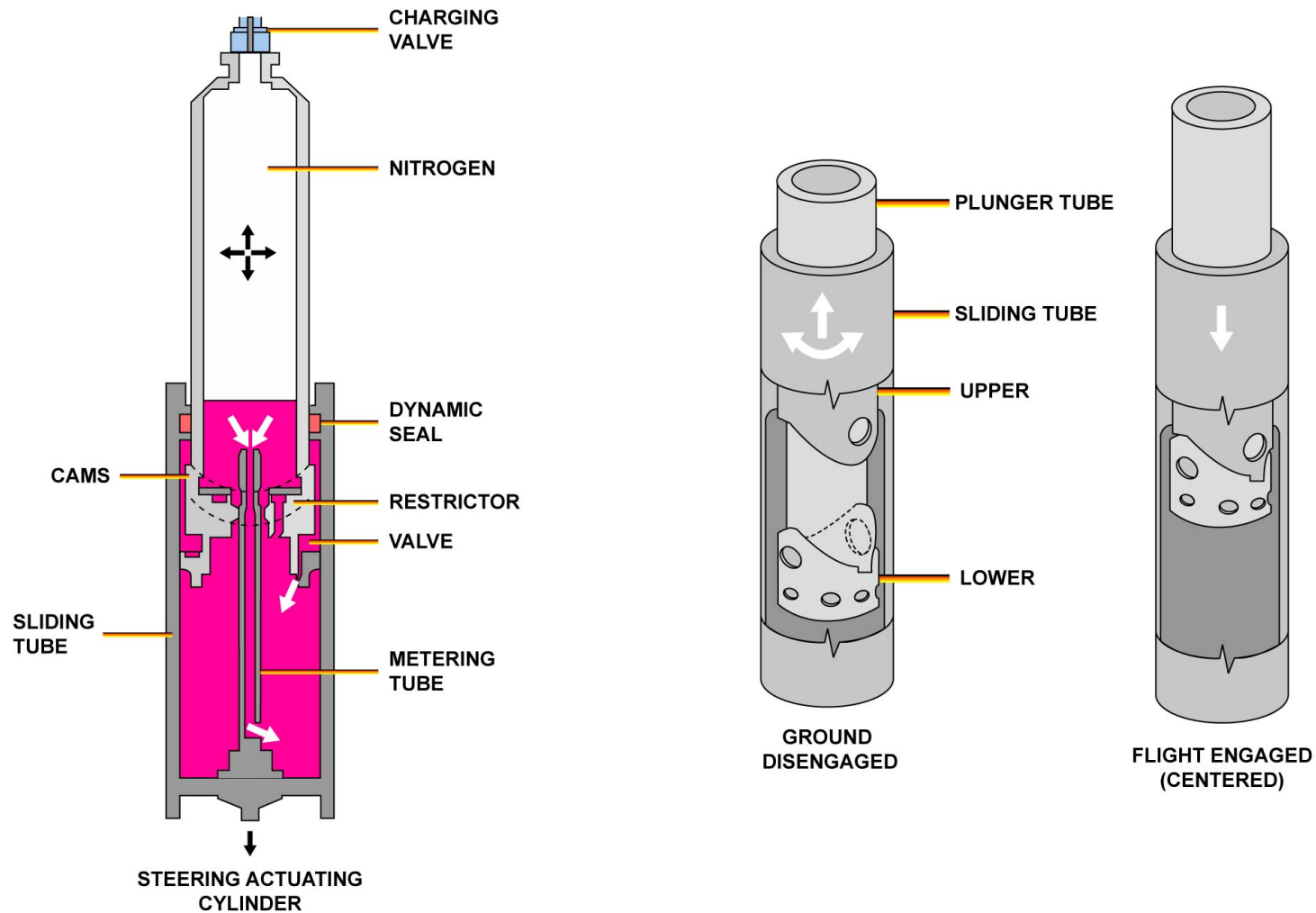


MAIN FITTING - SPARE-SEAL ACTIVATING-VALVE

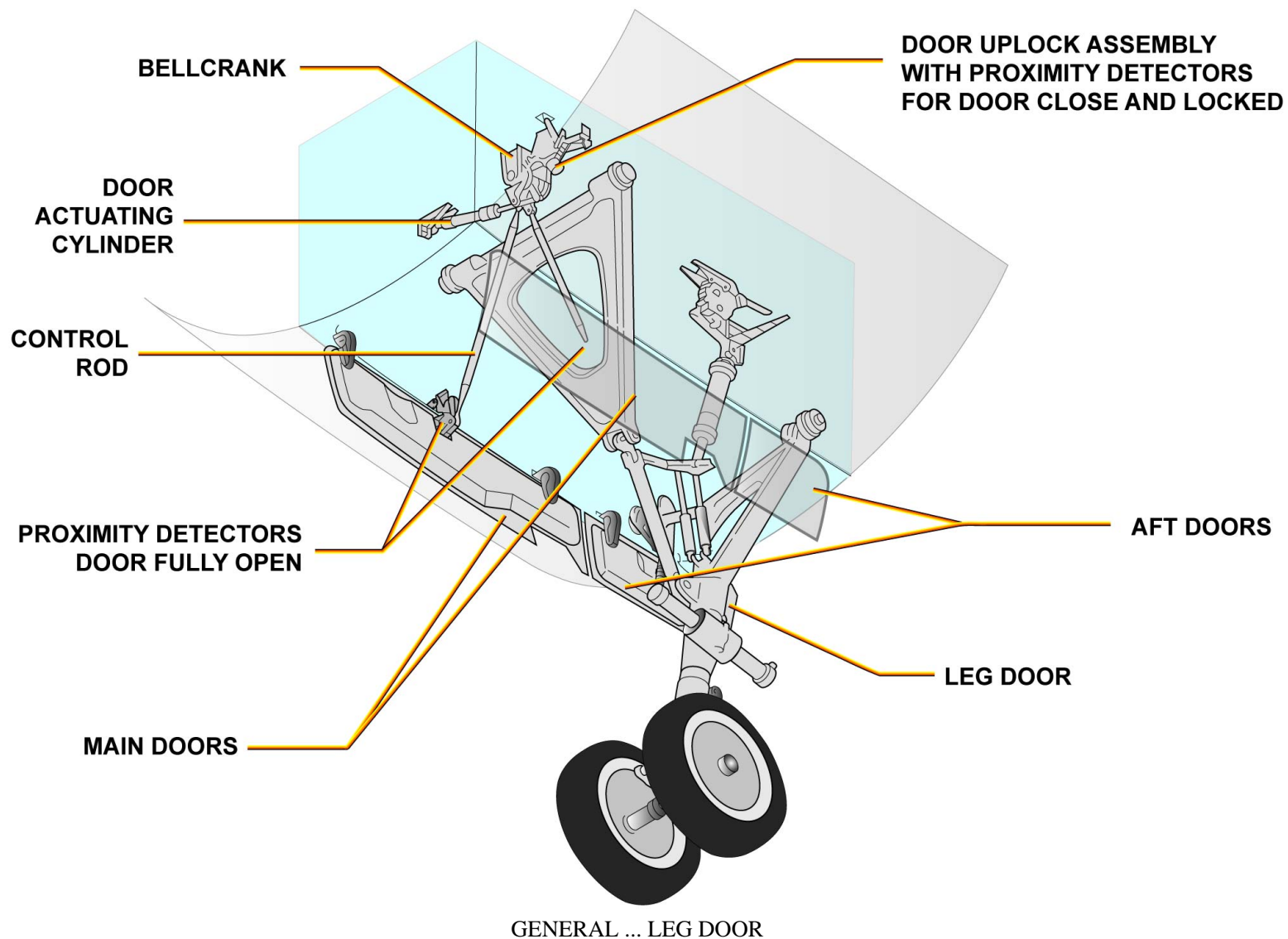




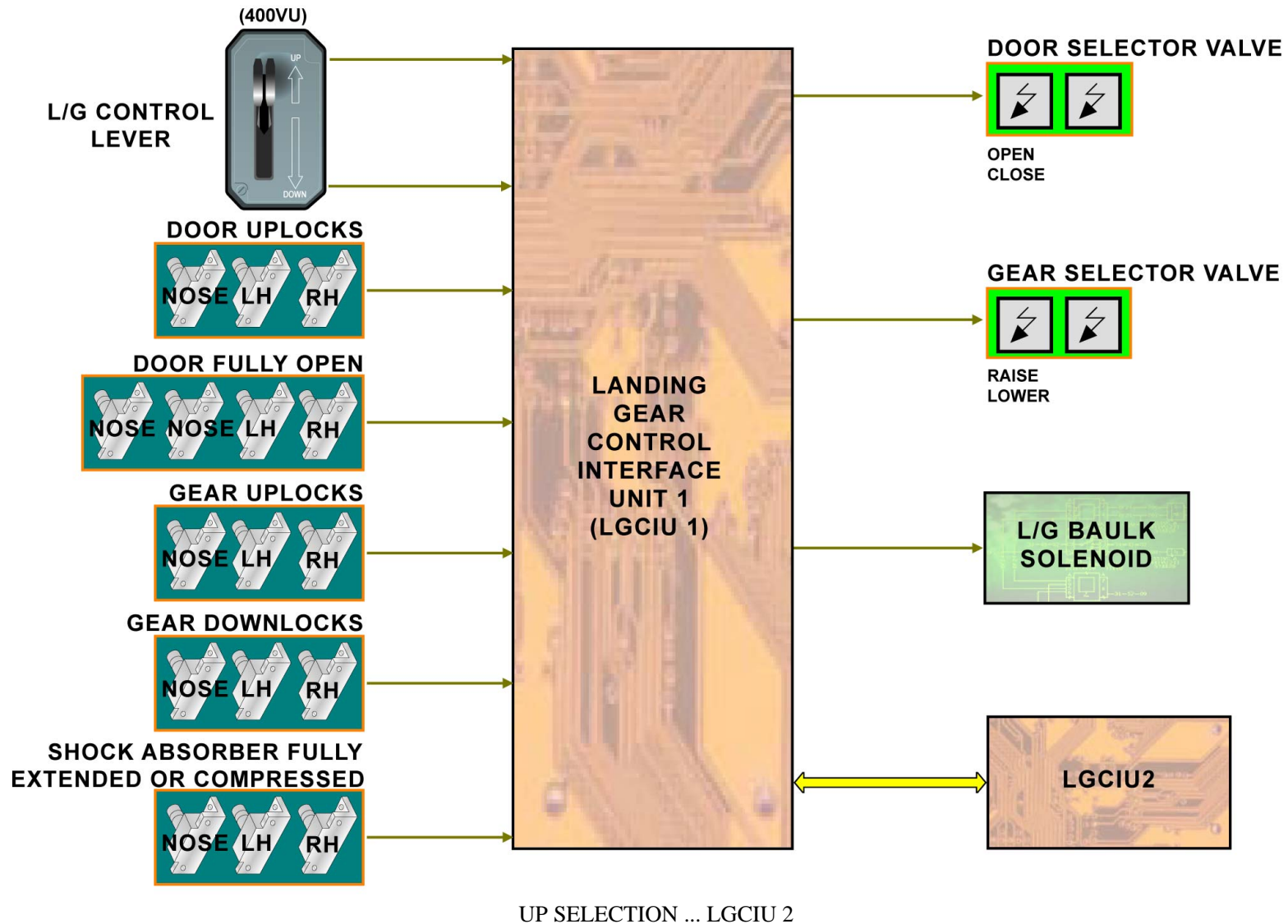


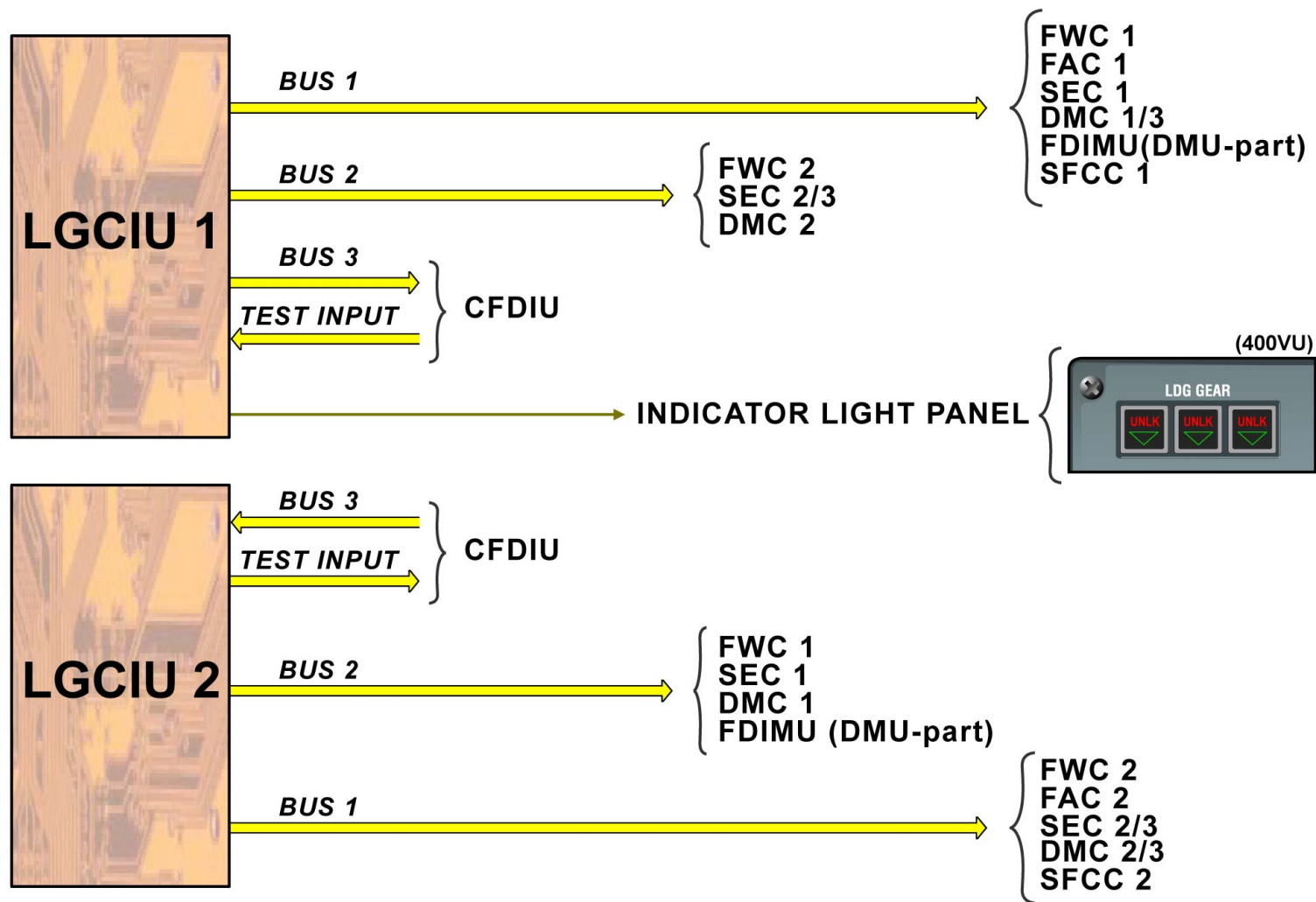


SHOCK ABSORBER

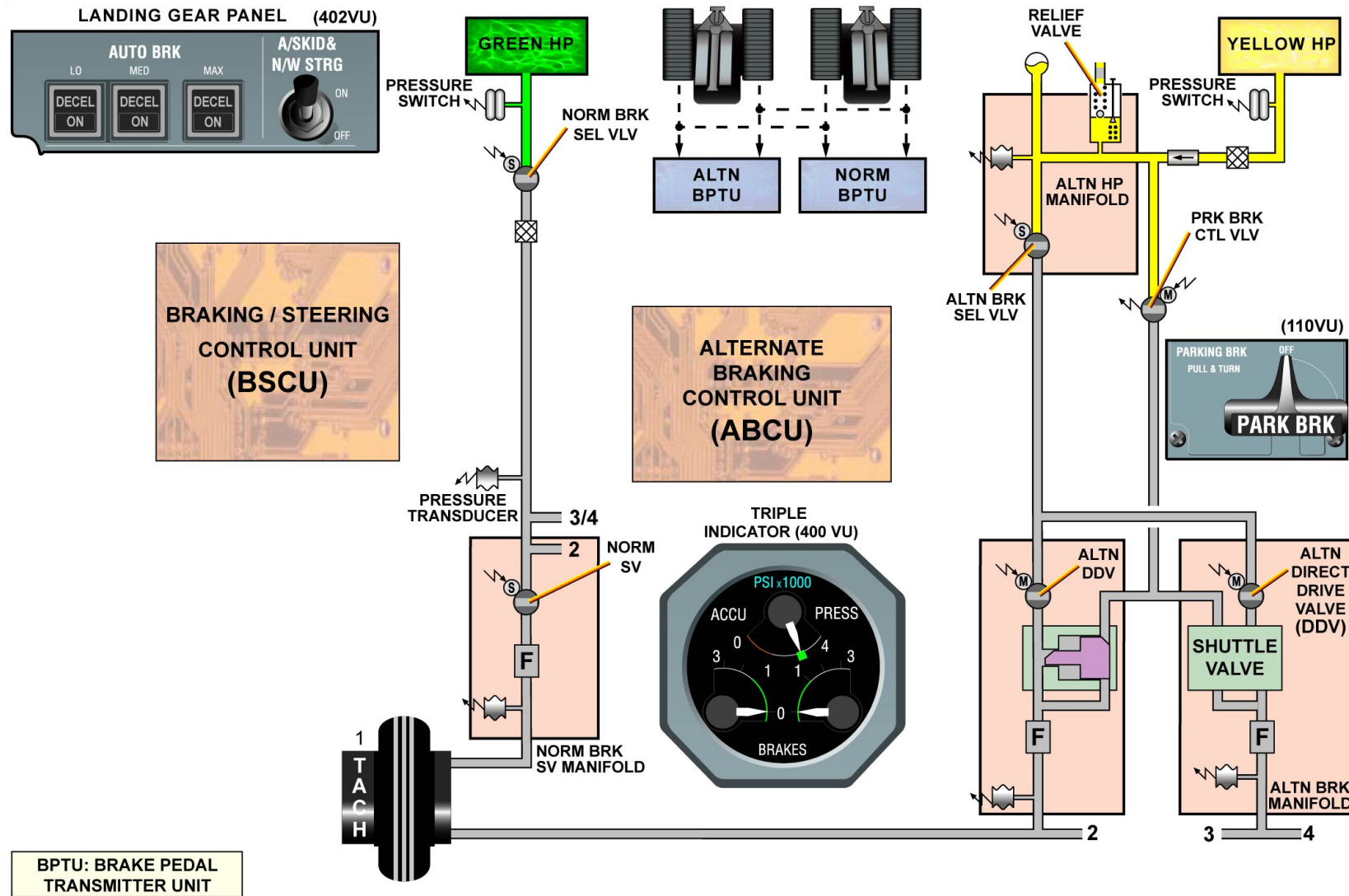




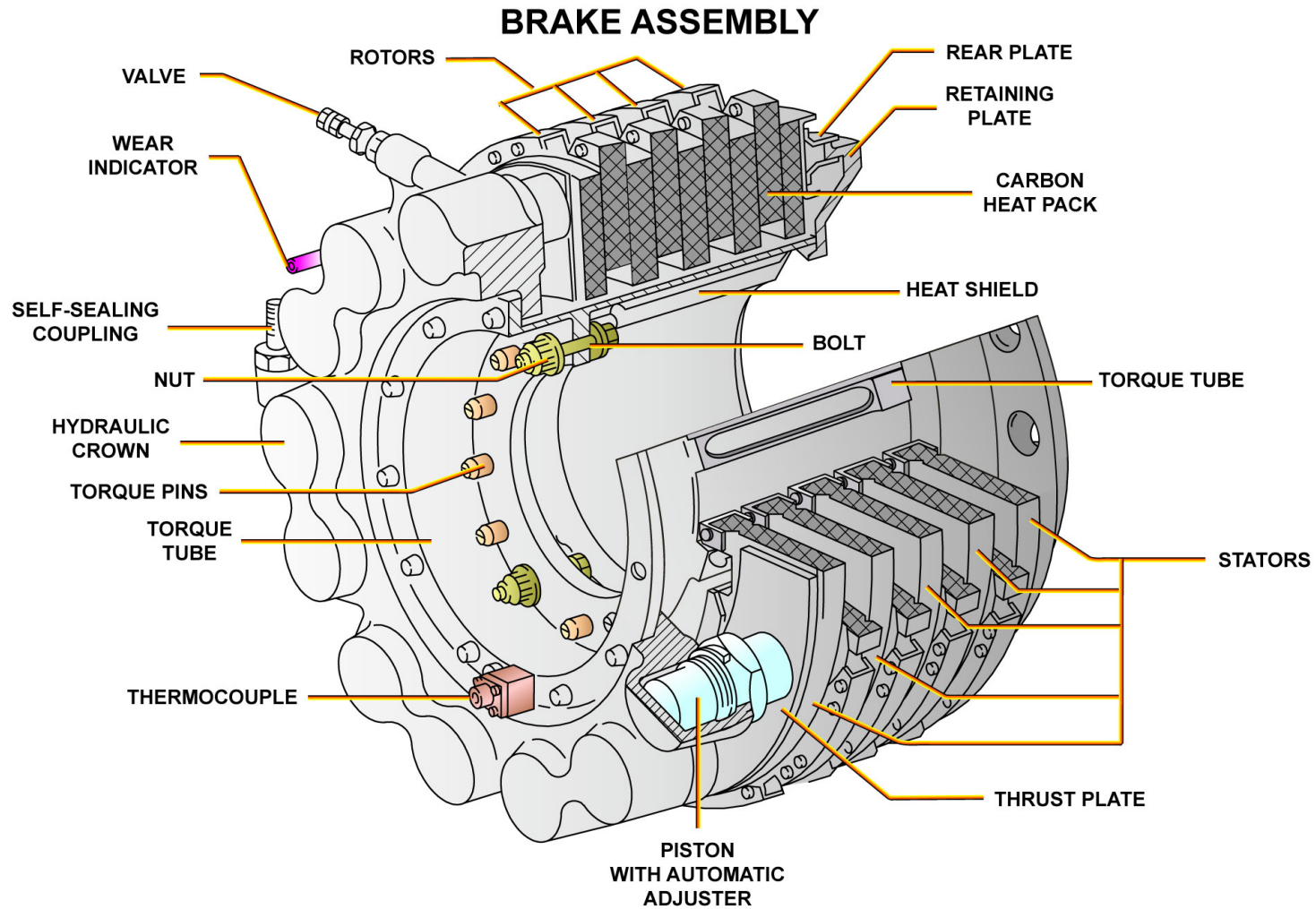




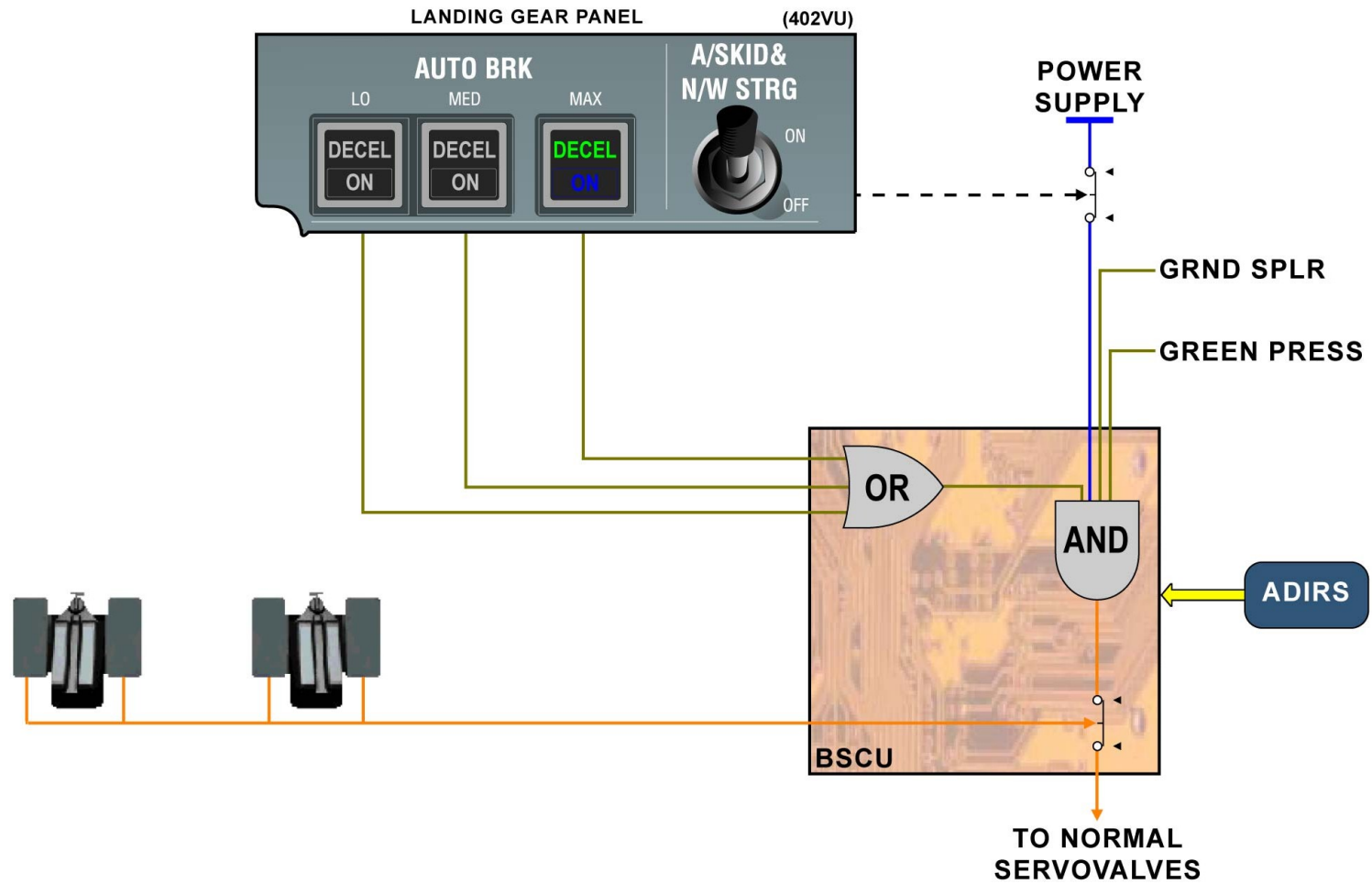
ARINC AND INDICATOR PANEL



B2 SCOPE ... ACCUMULATOR

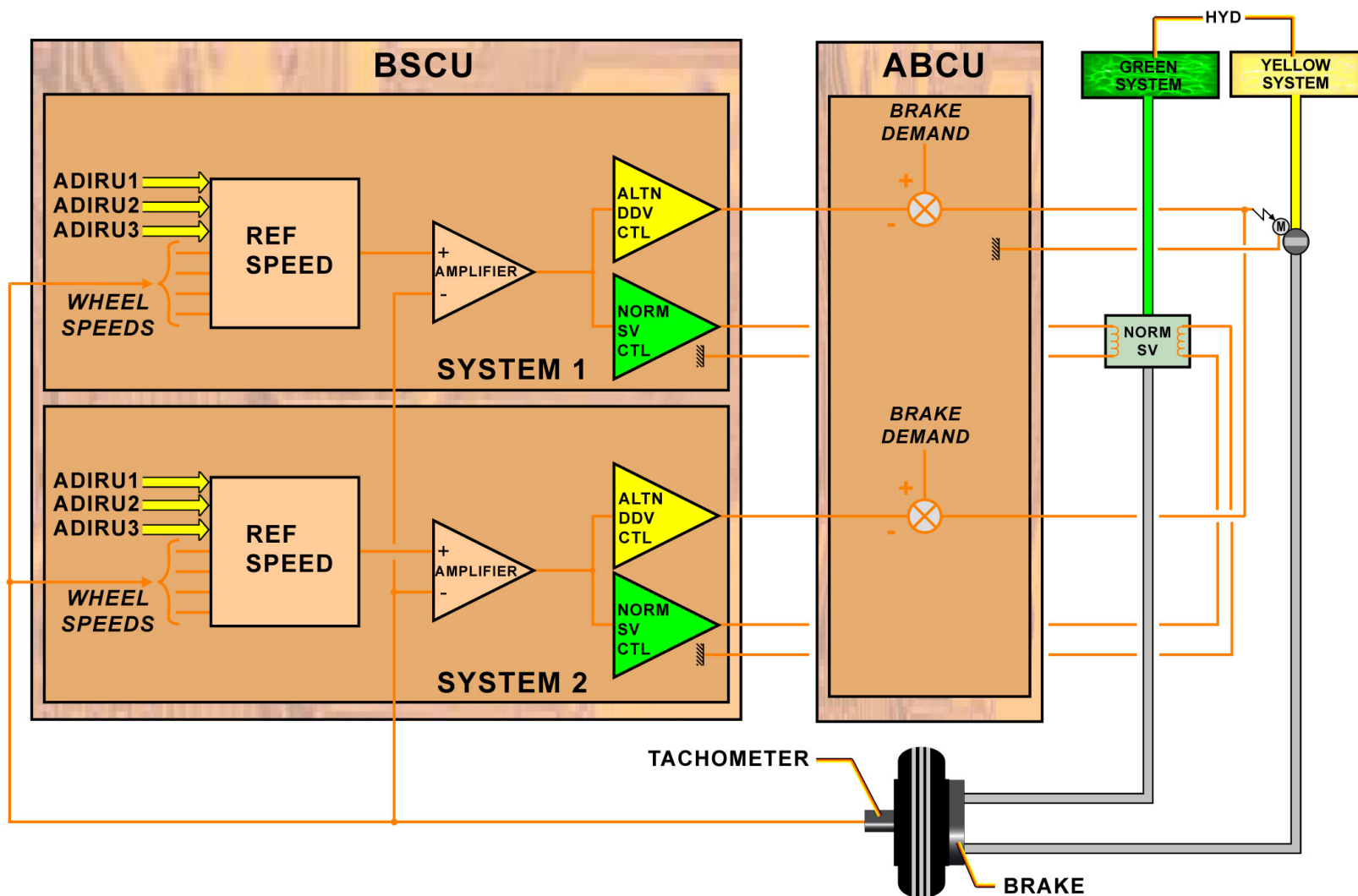


**BRAKE ASSEMBLY**

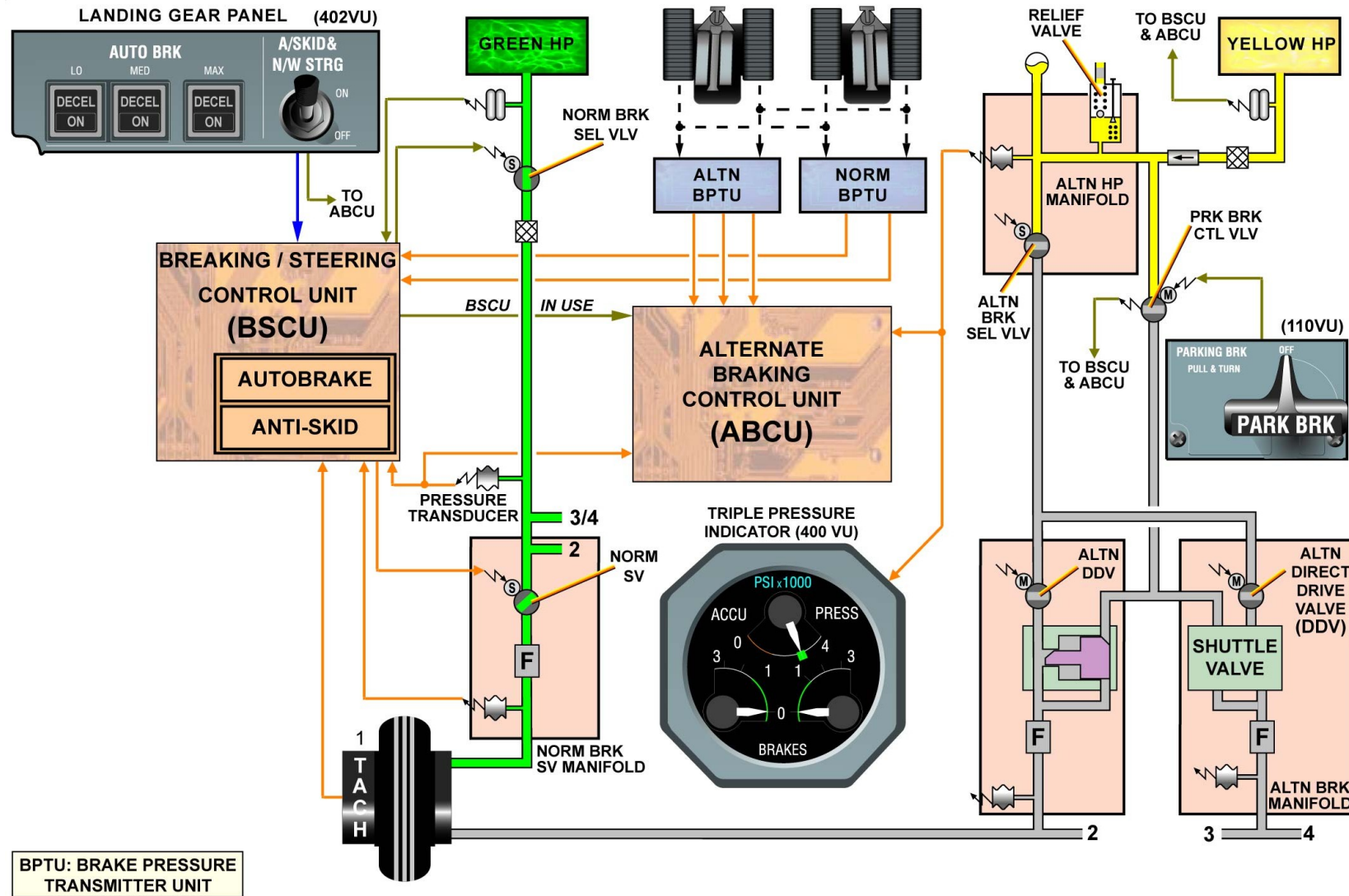


AUTOBRAKE MODES ... DISARMING

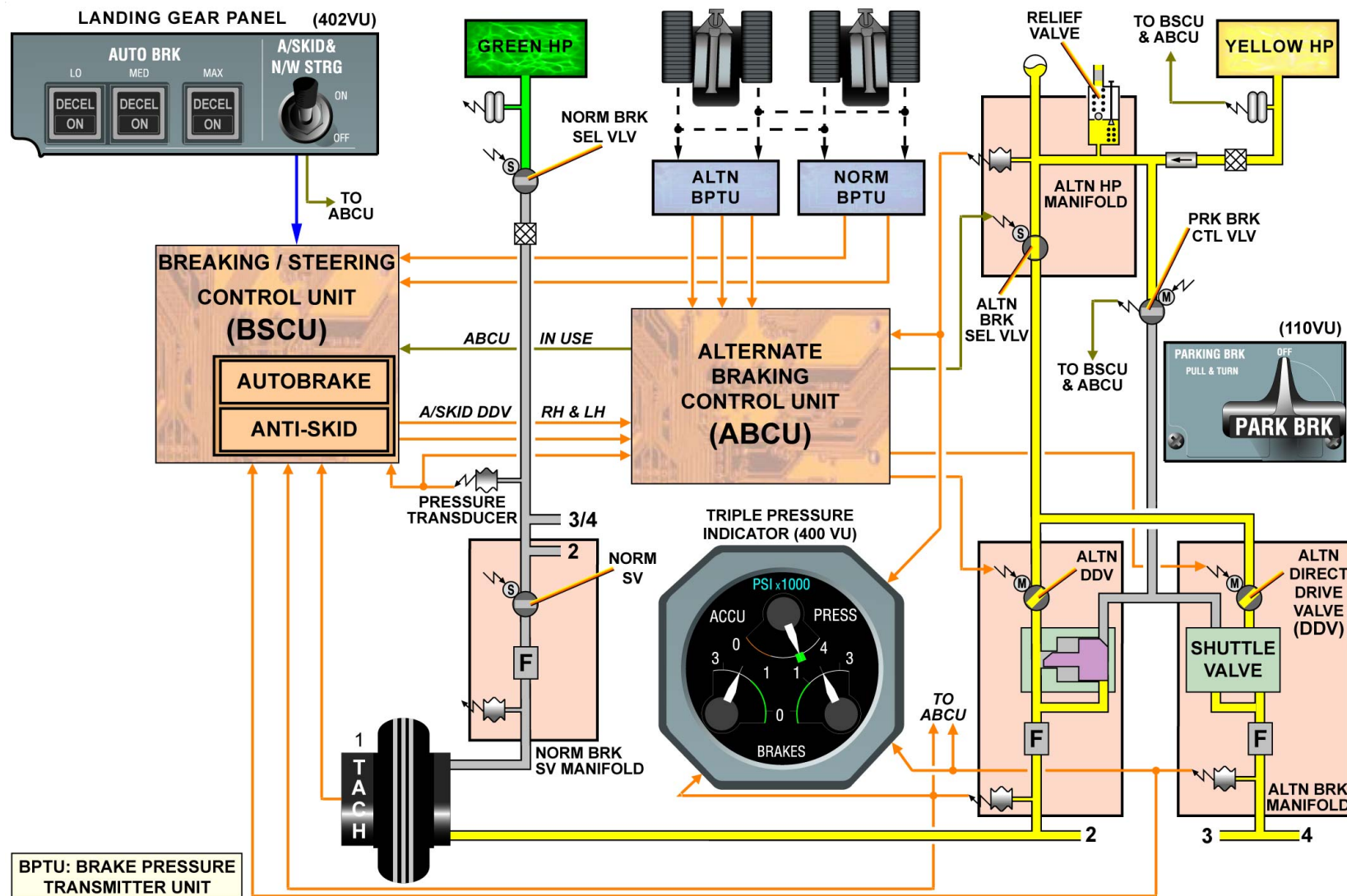




PURPOSE ... ADIRU

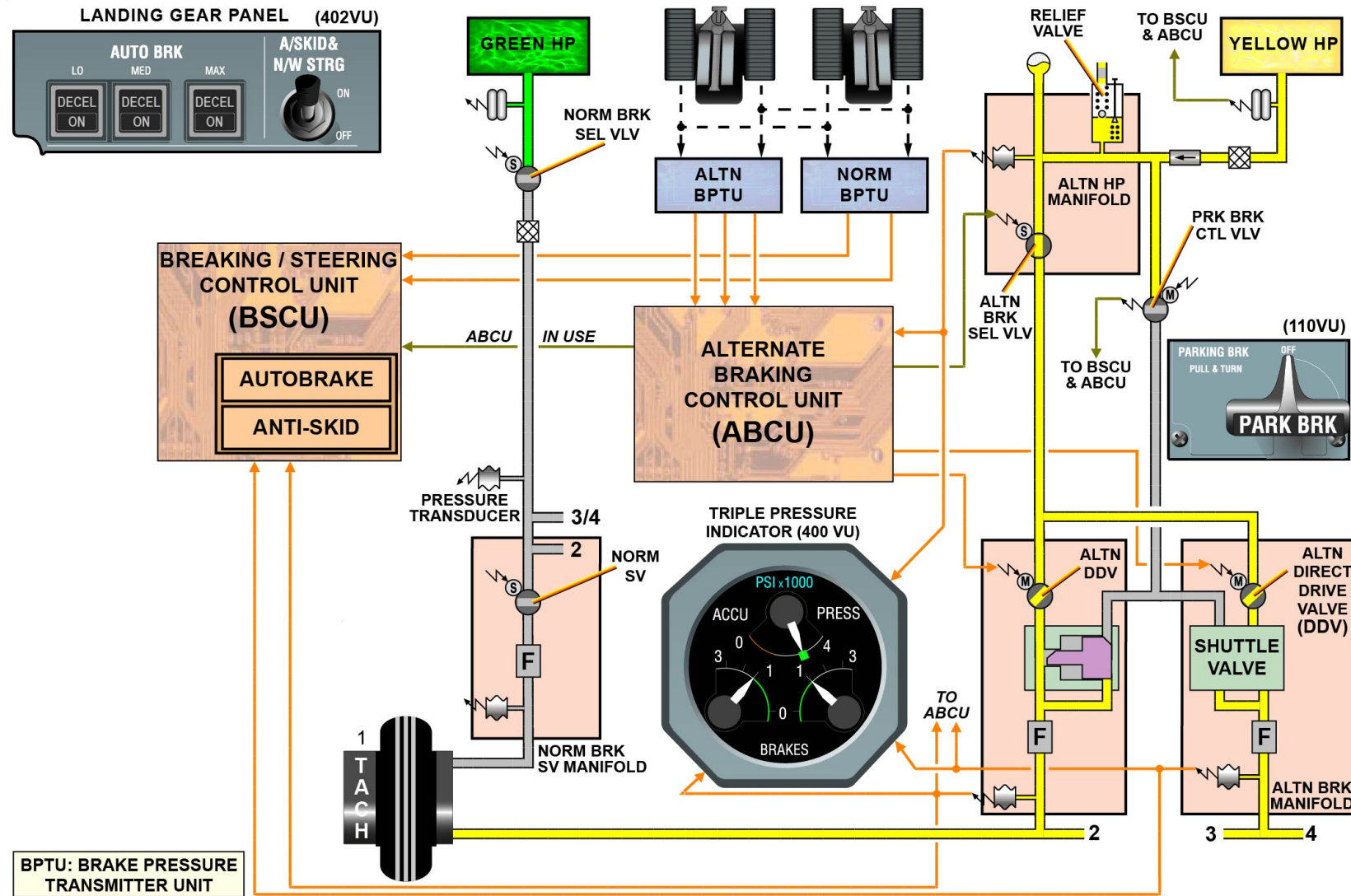


GENERAL &amp; NORMAL BRAKING

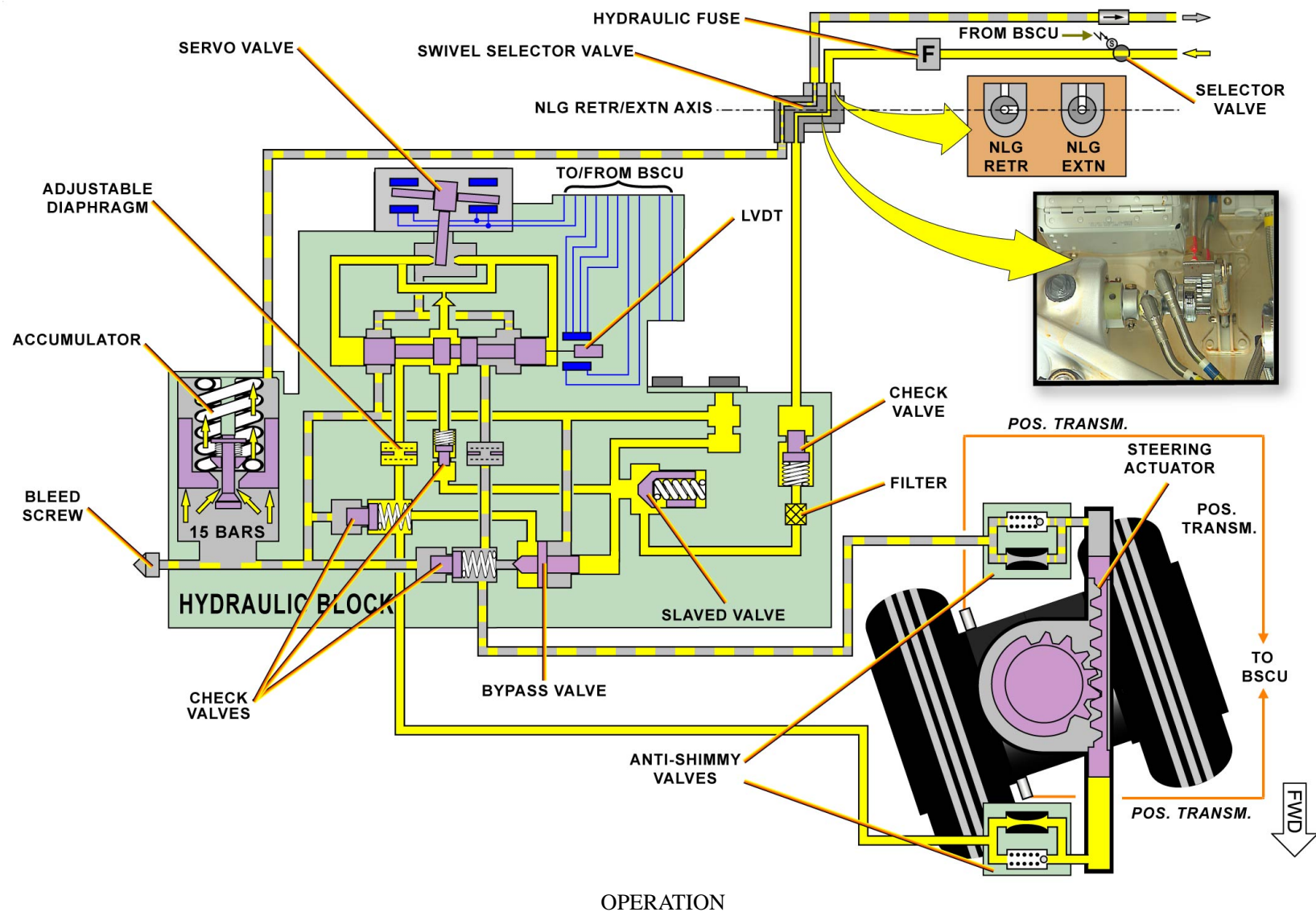


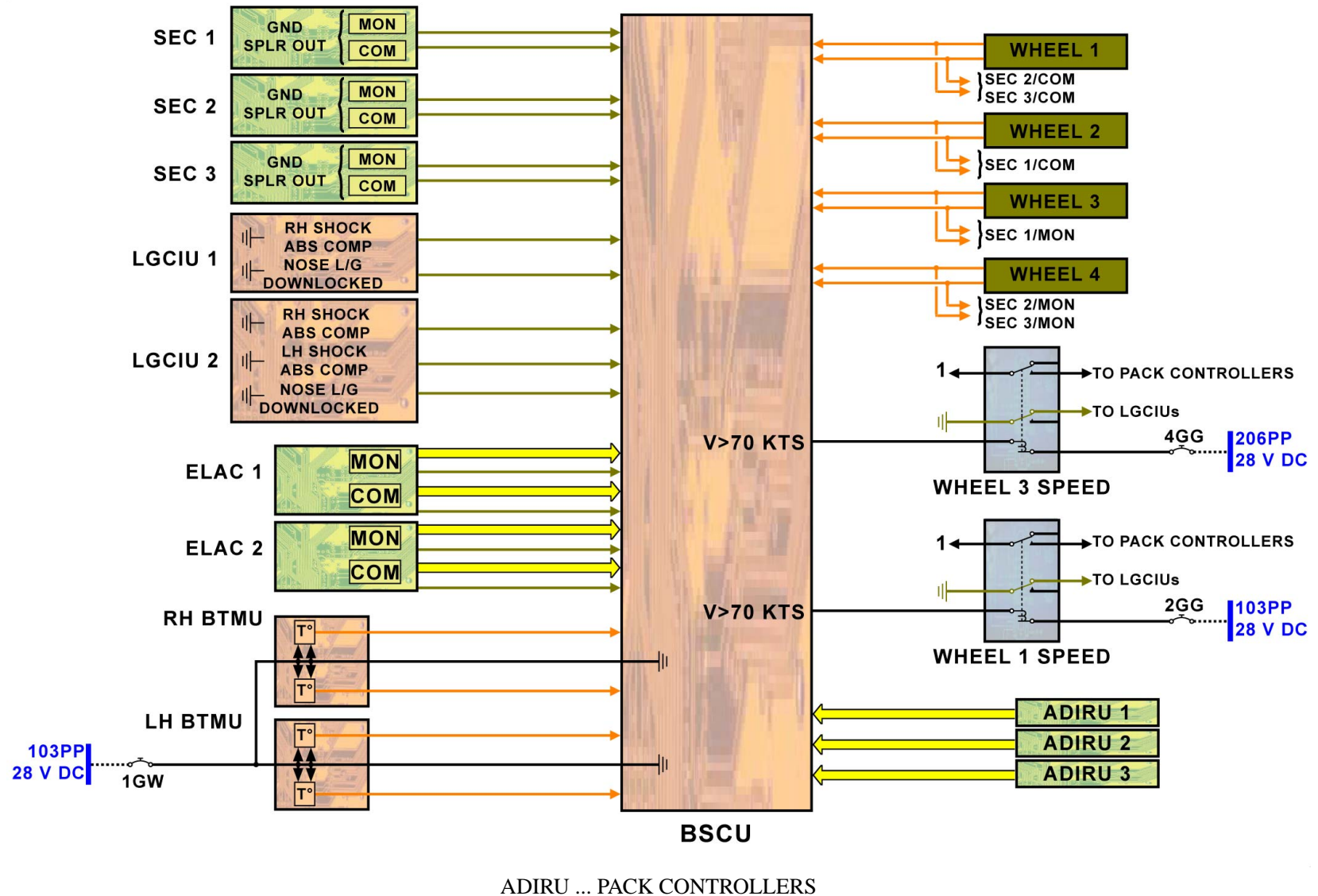
ALTN BRAKING WITH A/SKID

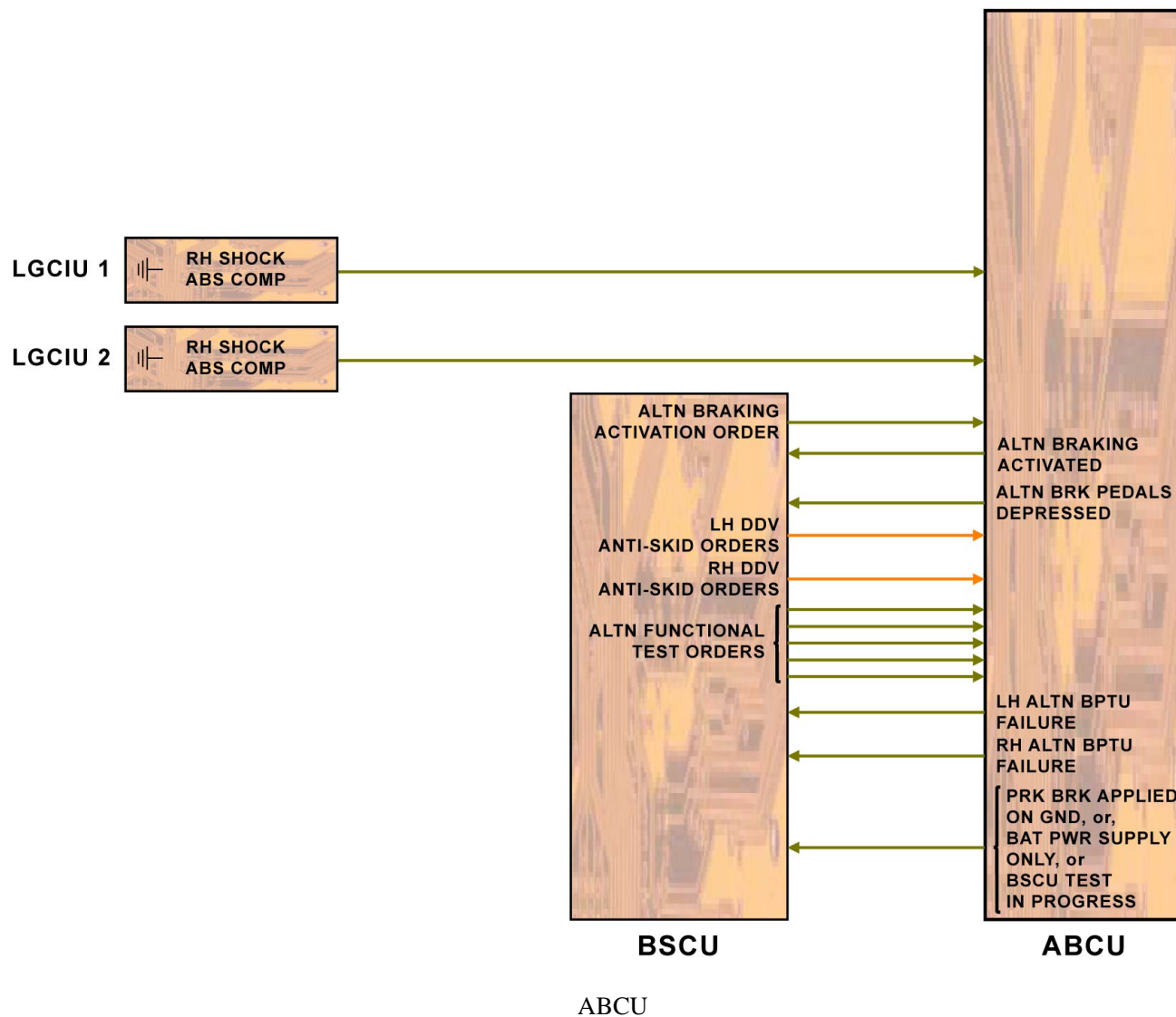




ALTN BRAKING WITHOUT A/SKID









© AIRBUS SAS 2015. All rights reserved.  
Confidential and proprietary document.

This document and all information contained herein is the sole property of AIRBUS SAS. No intellectual property rights are granted by the delivery of this document or the disclosure of its content. This document shall not be reproduced or disclosed to a third party without the express written consent of AIRBUS SAS. This document and its content shall not be used for any purpose other than for which it is supplied. The statements made herein do not constitute an offer. They are based on the mentioned assumptions and are expressed in good faith. Where the supporting grounds for these statements are not shown, AIRBUS SAS will be pleased to explain the basis thereof.

AIRBUS, its logo, A300, A310, A318, A319, A320, A321, A330, A340, A350, A380, A400M are registered trademarks.