

A319/A320/A321

STUDENT NOTES

LR Family to A319/A320/A321 PW1100G - T1+T2

29-HYDRAULIC POWER

This document must be used for training purposes only.

Under no circumstances should this document be used as a reference.

It will not be updated.

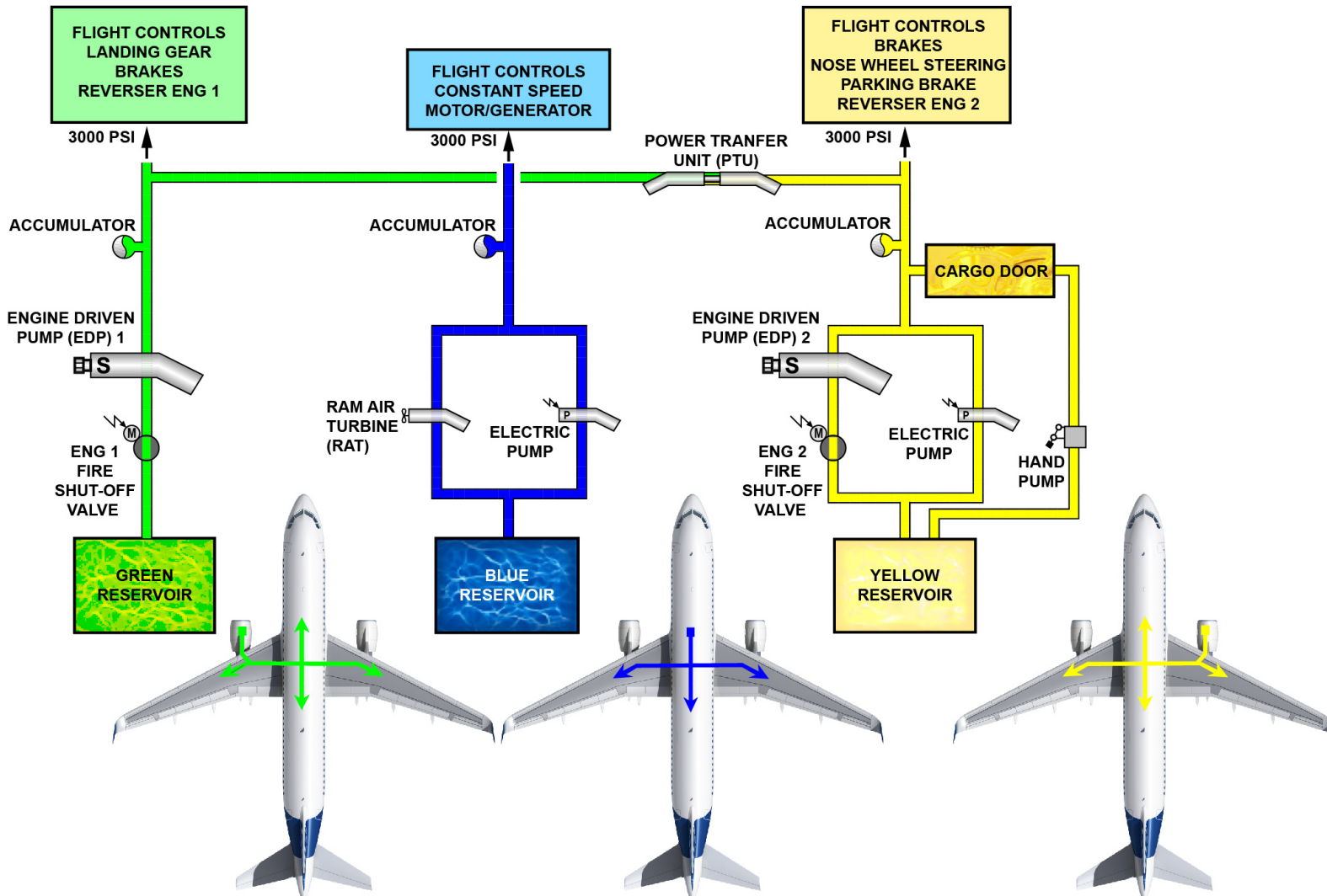
All rights reserved

No part of this manual may be reproduced in any form,
by photostat, microfilm, retrieval system, or any other means,
without the prior written permission of AIRBUS S.A.S.

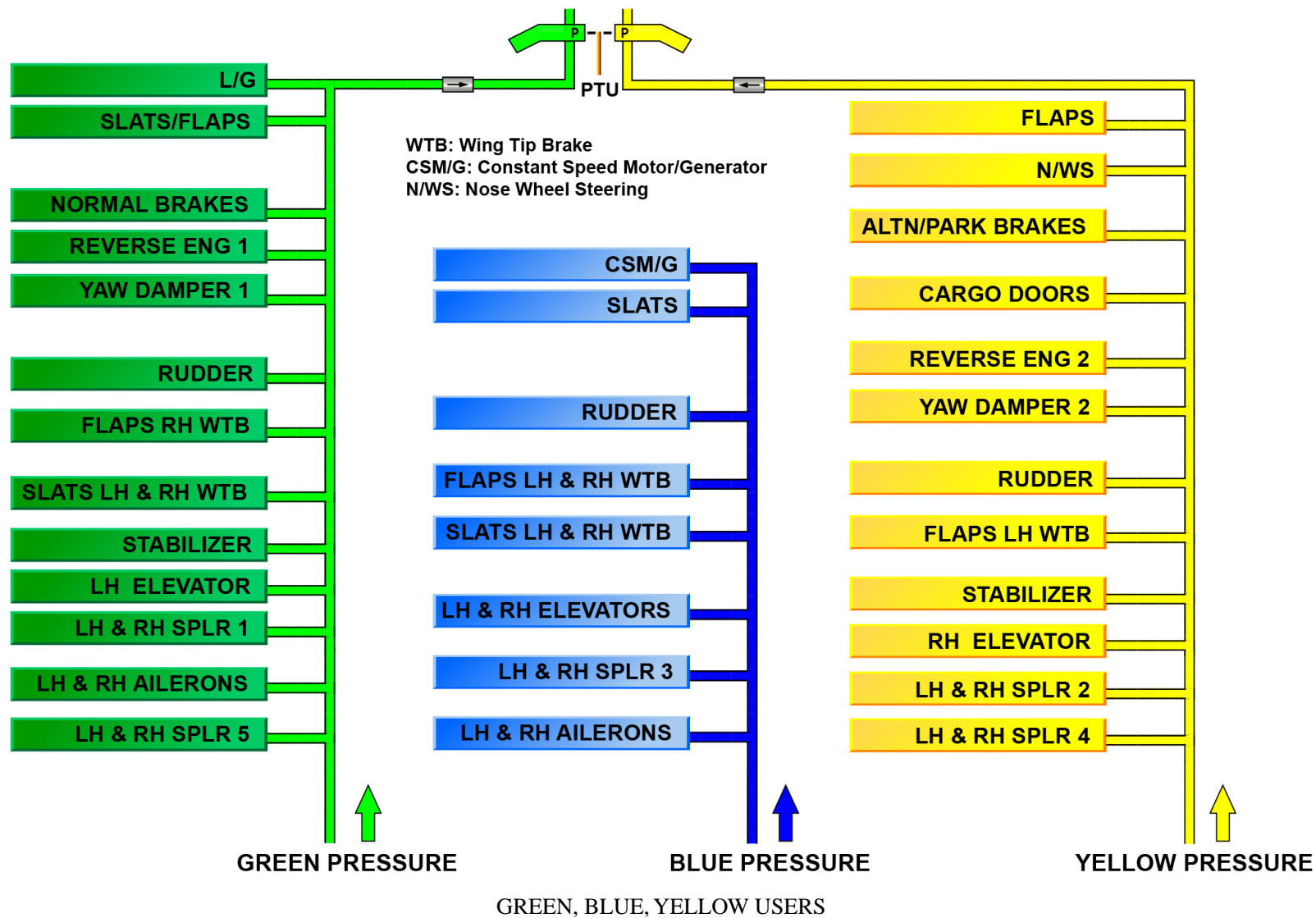


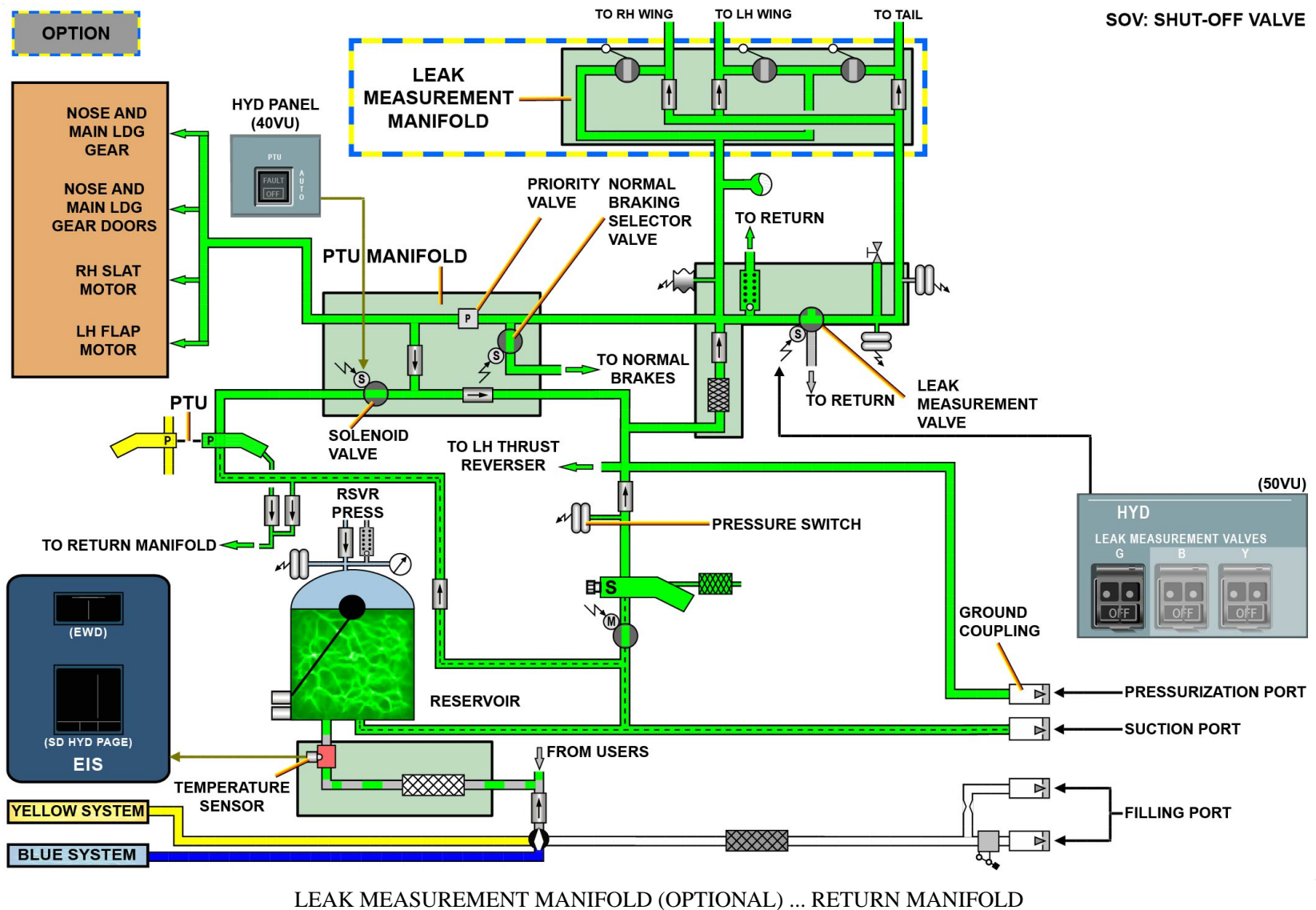
AIRBUS Environmental Recommendation.
Please consider your environmental responsibility before printing this document.

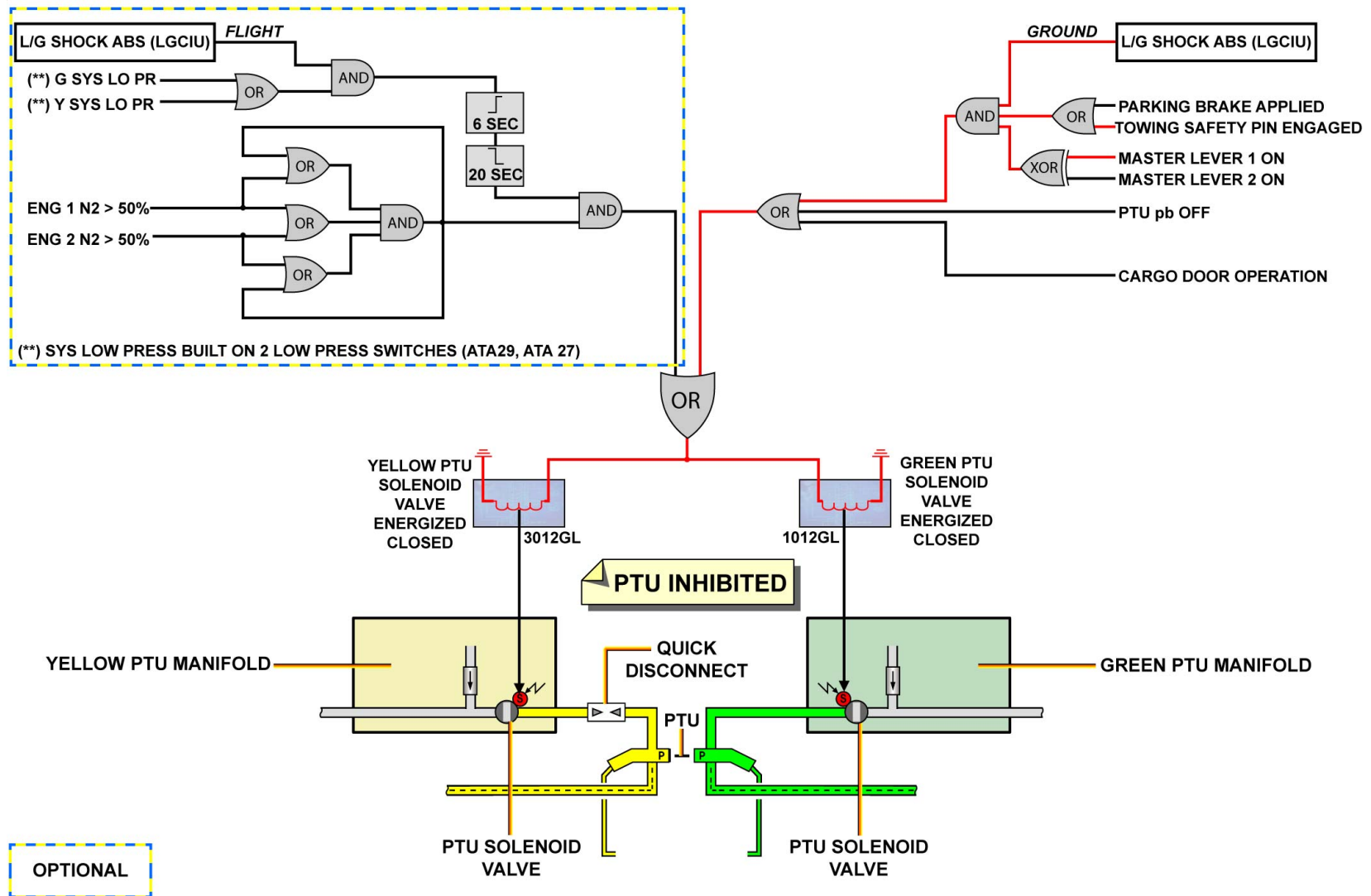
29 Hydraulic Power System Presentation.....	2
Hydraulic System Users.....	3
Green Hydraulic System D/O.....	4
Blue Hydraulic System D/O.....	7
Yellow Hydraulic System D/O.....	9



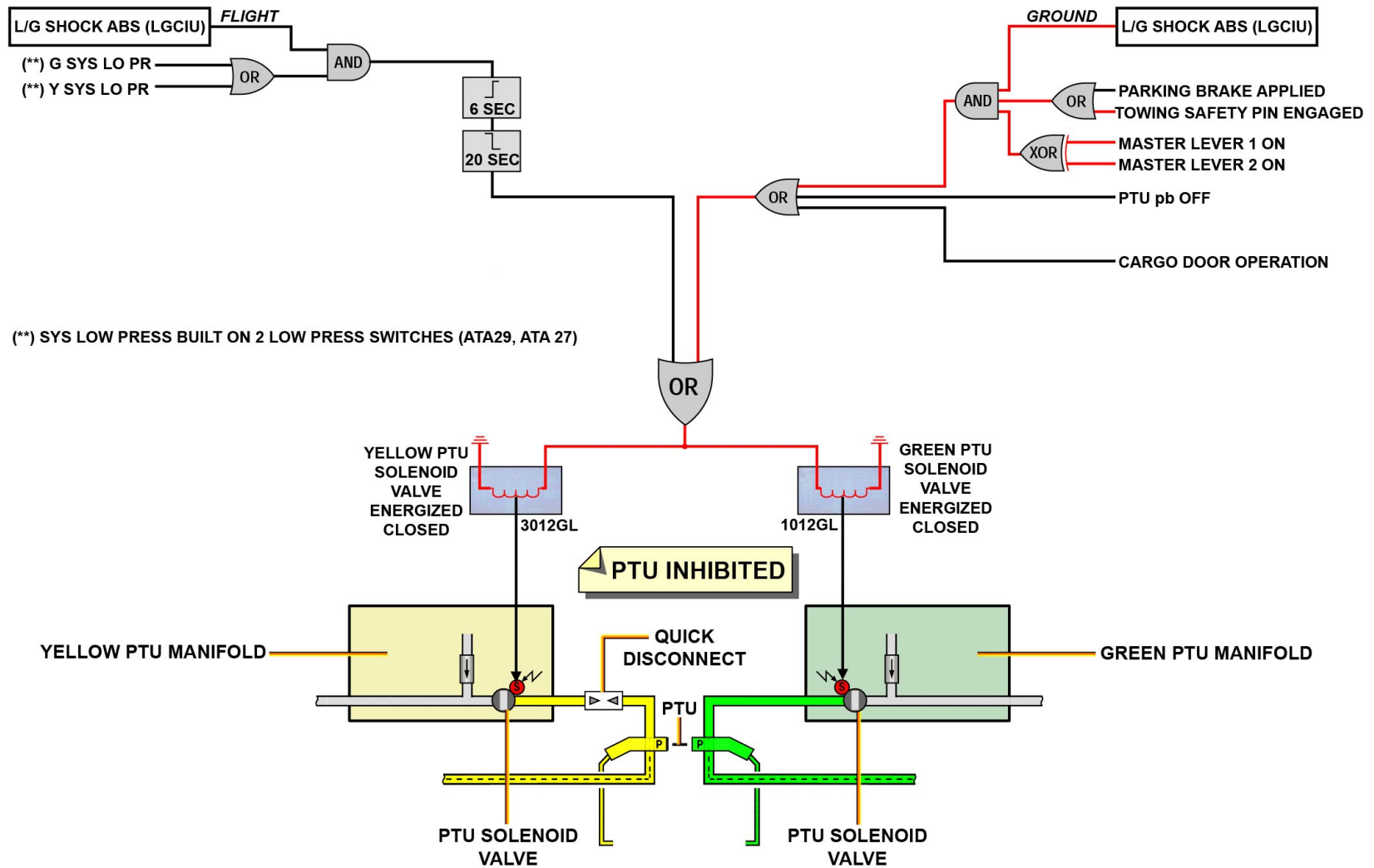
SYSTEM INTRODUCTION



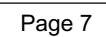


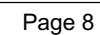


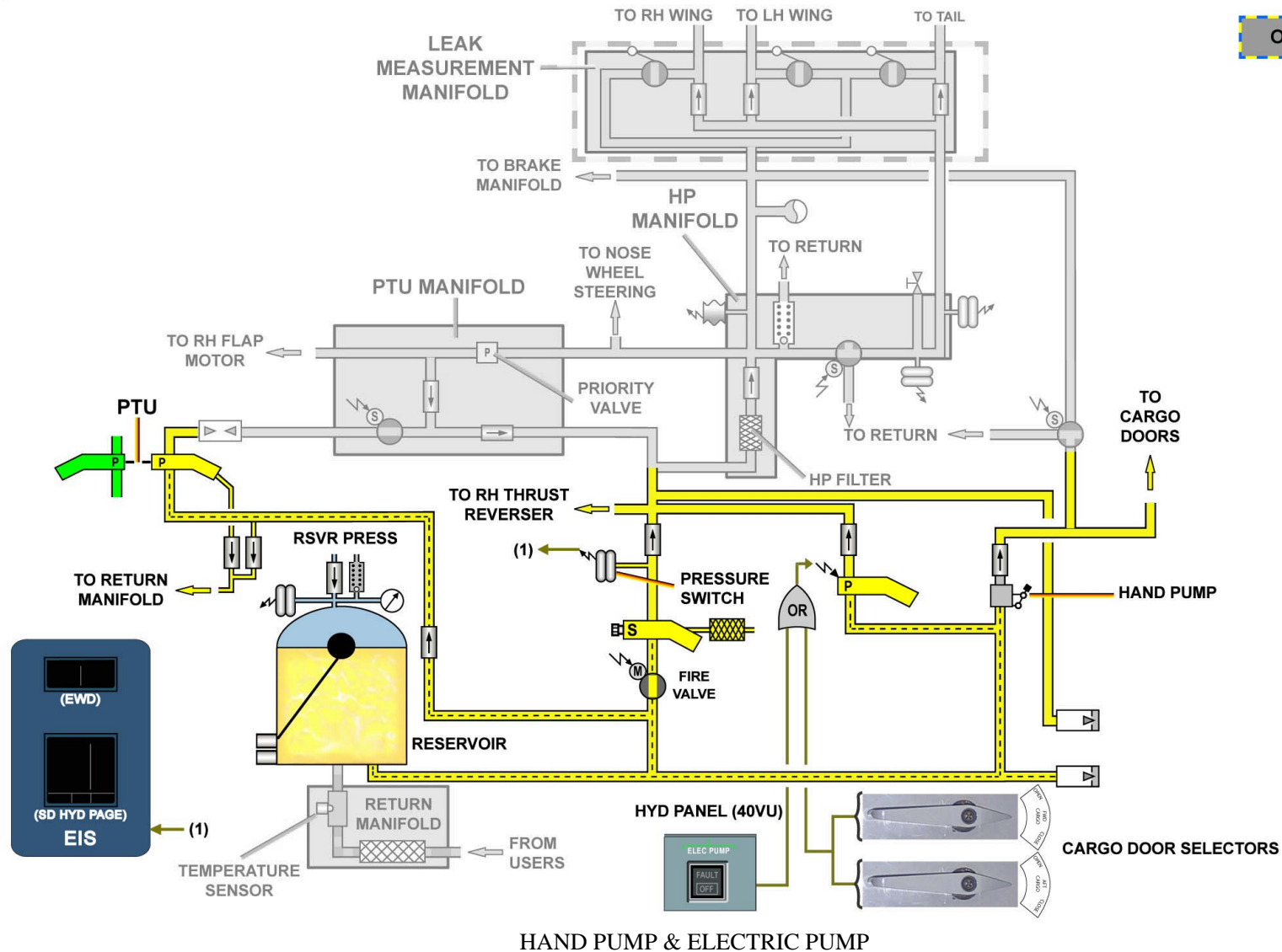
POWER TRANSFER UNIT (PTU) - PTU INHIBITION FOR CEO

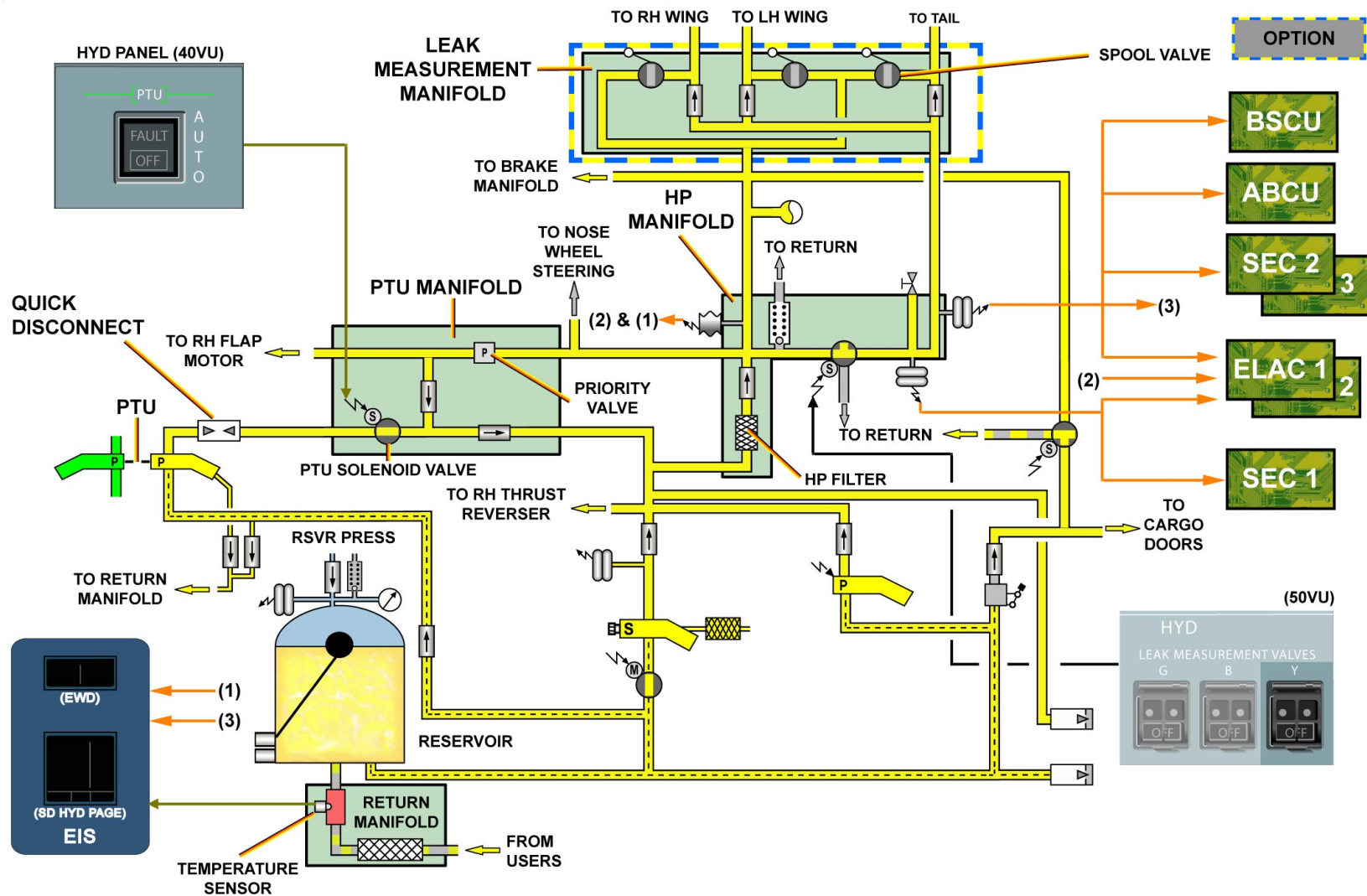


POWER TRANSFER UNIT (PTU) - PTU INHIBITION FOR NEO









HP MANIFOLD ... RETURN MANIFOLD



© AIRBUS SAS 2015. All rights reserved.
Confidential and proprietary document.

This document and all information contained herein is the sole property of AIRBUS SAS. No intellectual property rights are granted by the delivery of this document or the disclosure of its content. This document shall not be reproduced or disclosed to a third party without the express written consent of AIRBUS SAS. This document and its content shall not be used for any purpose other than for which it is supplied. The statements made herein do not constitute an offer. They are based on the mentioned assumptions and are expressed in good faith. Where the supporting grounds for these statements are not shown, AIRBUS SAS will be pleased to explain the basis thereof.

AIRBUS, its logo, A300, A310, A318, A319, A320, A321, A330, A340, A350, A380, A400M are registered trademarks.